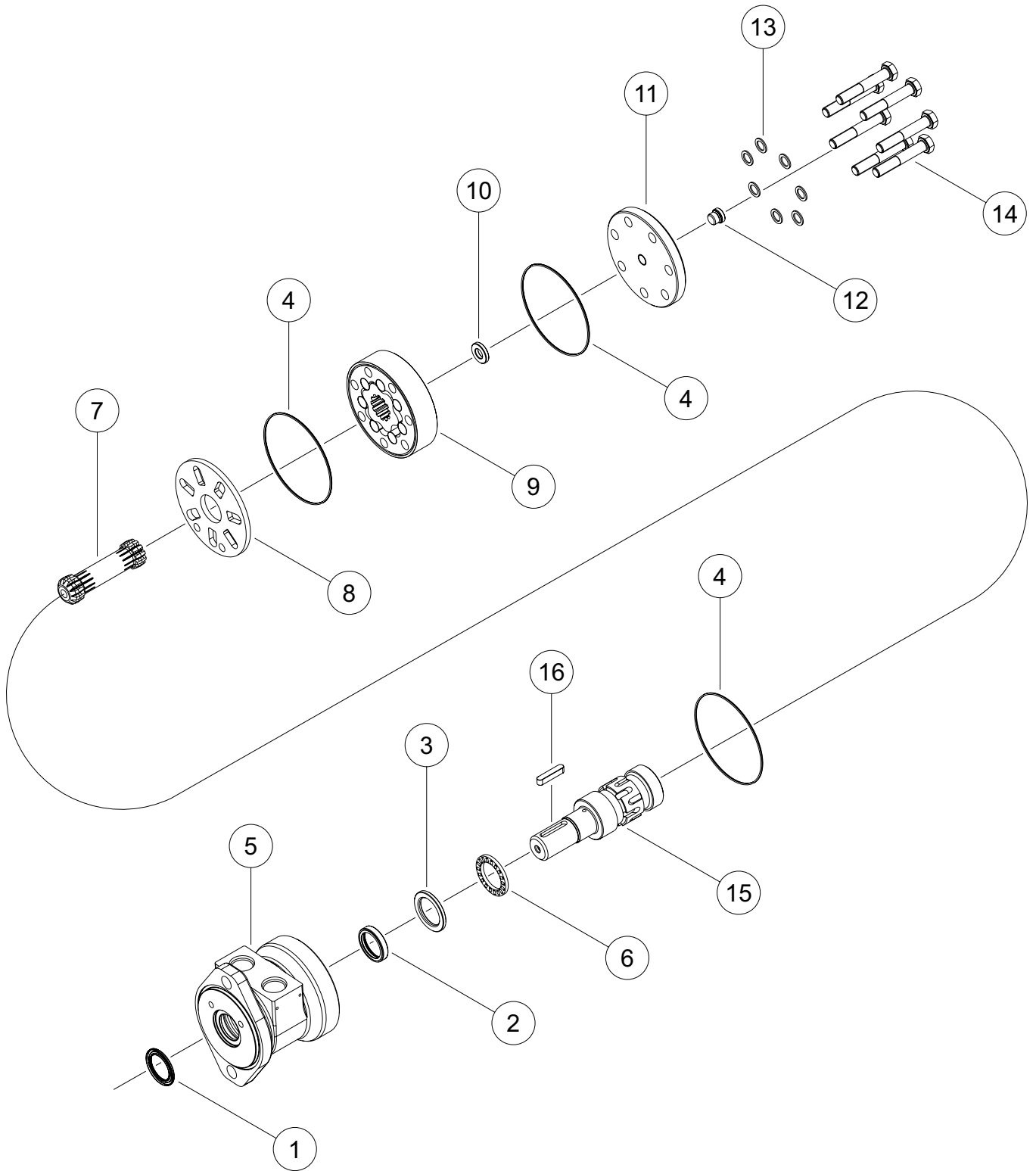


# WR (251) SERIES MOTOR



# WR (251) SERIES MOTOR COMPONENTS

## SEAL KIT 251222001

DESCRIPTION	EXP VIEW ITEM #	KIT
DUST SEAL	1	ITEMS #1-4 INCLUDED IN SEAL KIT: 251222001
SHAFT SEAL	2	
THRUST WASHER	3	
BODY SEALS (3)	4	

## MISCELLANEOUS KITS

DESCRIPTION	EXPLODED VIEW ITEM #	KIT
THRUST BEARING	6	155018603
WEAR PLATE	8	255012001
ENDCOVER	11	251016001
STEEL PLUG	12	500018186
BOLT WASHER SET	13	255018701

## ROTORS, DRIVE LINKS AND SPACERS, AND BOLTS

WHEN CHANGING MOTOR DISPLACEMENTS, A MATCHING DRIVE LINK KIT, SPACER, AND BOLT SET KIT MAY NEED TO BE ORDERED.

EXPLODED VIEW ITEM #	9	9	7	10	14
DISPLACEMENT	STANDARD ROTOR KIT	FREETURN ROTOR KIT	DRIVE LINK KIT	DRIVE LINK SPACER	BOLT SET KIT
040	255027003	255027007	155014011	---	255018101
050	255507003	255507007	155014011	---	255018101
060	255037003	255037007	155014002	---	255018102
070	255047003	255047007	155014002	---	255018102
080	255807003	255807007	155014022	---	255018102
090	255057003	255057007	155014018	---	255018103
100	255997003	255997007	155014003	---	255018103
115	255077003	255077007	155014003	---	255018104
130	255087003	255087007	155014019	---	255018104
160	255107003	255107007	155014019	251224160	255018105
200	255127003	255127007	155014019	251224200	255018106
240	255147003	255147007	155014019	251224240	255018111
250	255157003	255157007	155014019	251224250	255018107
290	255187003	255187007	155014019	251224290	255018110
320	255207003	255207007	155014019	251224320	255018108
400	255247003	255247007	155014019	251224400	255018109

## HOUSING KITS

(EXPLODED VIEW ITEM #5)

BECAUSE THE HOUSING AND SHAFT ARE MATCH GROUND AS A SET TO EXTREMELY TIGHT TOLERANCES AT THE FACTORY, WHITE DRIVE PRODUCTS DOES NOT RECOMMEND THAT INDIVIDUAL HOUSINGS OR SHAFTS BE ORDERED TO REPAIR A MOTOR. IT IS RECOMMENDED THAT A MATCHED SET BE ORDERED. TO ORDER A MATCHED HOUSING/SHAFT KIT, PLEASE CONTACT A WHITE DRIVE PRODUCTS CUSTOMER SERVICE REPRESENTATIVE

DESCRIPTION	HOUSING KIT	DESCRIPTION	HOUSING KIT
#A10 - 2-HOLE FRONT PORTS 1/2" NPT	251013001	#A71 - 2-HOLE SIDE PORTS 7/8" O-RING	251013200
#A11 - 2-HOLE FRONT PORTS 7/8" O-RING	251013002	#F30 - 4-HOLE ALIGNED PORTS 1/2" NPT	251013004
#A17 - 2-HOLE MANIFOLD PORTS 1/2" DRILLED	251013003	#F31 - 4-HOLE ALIGNED PORTS 7/8" O-RING	251013005
#A18 - 2-HOLE FRONT PORTS 1/2" BSP.F	251013007	#F37 - 4-HOLE MANIFOLD PORTS	251013006

## SHAFTS AND RELATED COMPONENTS KITS

SHAFT KITS COME WITH RELATED SHAFT COMPONENTS (i.e. keys, nuts, etc.) TO ORDER INDIVIDUAL KEYS, USE THE KEY KIT NUMBER. TO ORDER NUT KITS (FOR #13 SHAFT), SEE MISCELLANEOUS KITS LIST ABOVE.

EXPLODED VIEW ITEM #	15	16
DESCRIPTION	SHAFT KIT	KEY KIT
#02- 6B SPLINE (1/4-20 TAP)	145011001	---
#03- 6B SPLINE EXTENDED (5/16-18 TAP)	145011014	---
#04- 6B SPLINE (M8x1.25 TAP)	145011004	---
#10- 1" STRAIGHT	145011000	255018200
#12- 25MM STRAIGHT	145011006	255018201

## HOUSING/SHAFT KITS

HOUSING/SHAFT KITS COME WITH ITEMS 5, 15, & 16

TO ORDER A MATCHED HOUSING/SHAFT KIT, PLEASE CONTACT A WHITE DRIVE PRODUCTS CUSTOMER SERVICE REPRESENTATIVE.