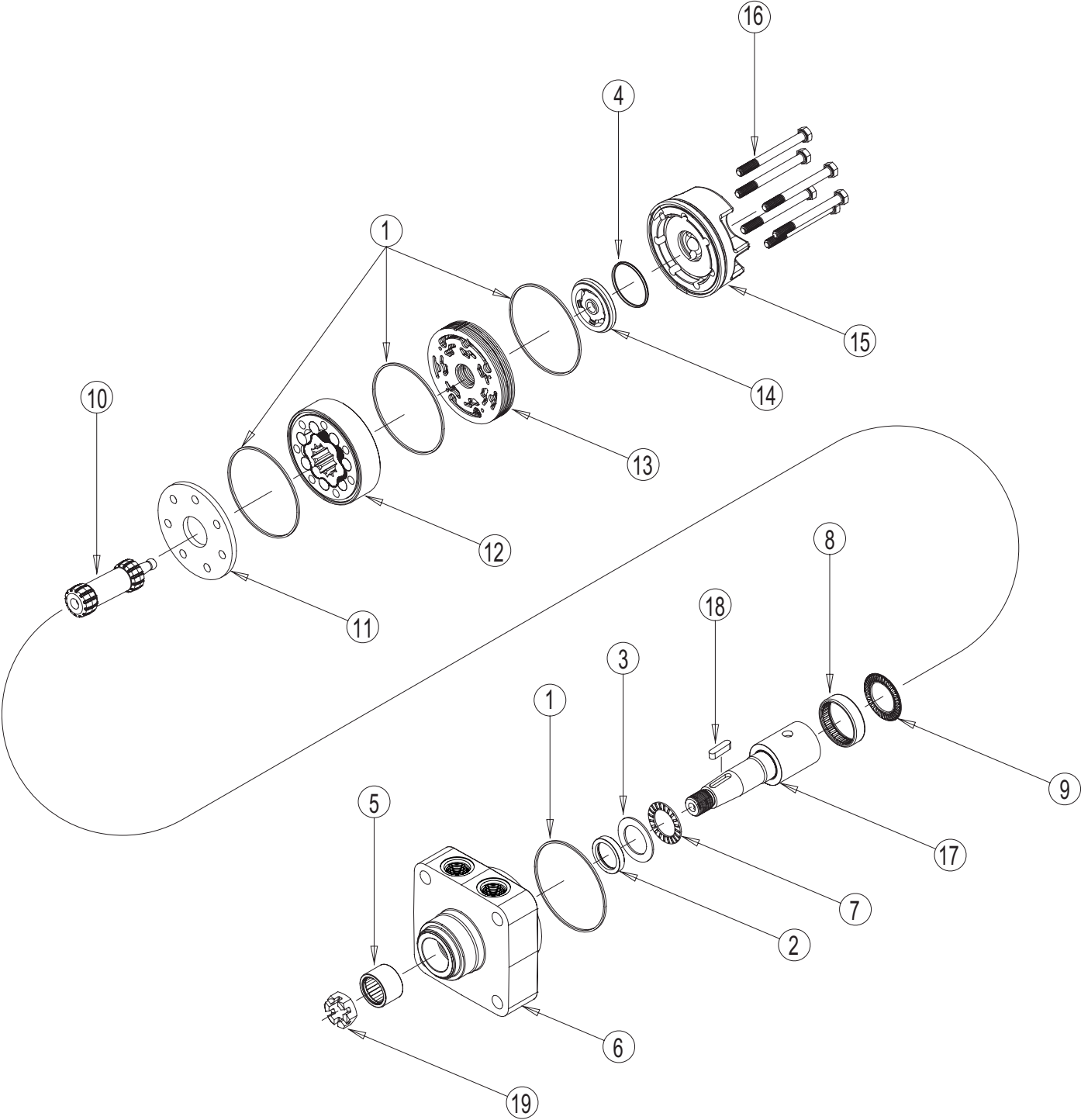


WG (275) SERIES MOTOR



WG (275) SERIES MOTOR COMPONENTS

SEAL KIT 270501001

DESCRIPTION	EXP VIEW ITEM #	KIT
BODY SEAL (4)	1	ITEMS #1-4 & 8 INCLUDED IN SEAL KIT: 270501001
SHAFT SEAL	2	
THRUST WASHER	3	
COMMUTATOR SEAL	4	
REAR HOUSING BEARING	8	

MISCELLANEOUS KITS

DESCRIPTION	EXPLODED VIEW ITEM #	KIT
BODY SEAL	1	270018000
FRONT HOUSING BEARING	5	270018001
FRONT THRUST BEARING	7	270018011
REAR HOUSING BEARING	8	270018021
REAR THRUST BEARING	9	270018003
WEAR PLATE	11	270012000
MANIFOLD	13	270015007
REVERSE MANIFOLD	13	270015008
COMMUTATOR	14	270012001
STANDARD ENDCOVER	15	275016507
3/4" O-RING PORTED ENDCOVER	NOT SHOWN	270016003
LOCK NUT	NOT SHOWN	270229301
CASTLE NUT	19	270229300

NOTE: EFFECTIVE NOVEMBER 9, 2009 THE STANDARD ENDCOVER THICKNESS WAS SHORTENED TO 19MM [.881 IN]. IF REPLACING A NON PORTED ENDCOVER WITH A THICKNESS GREATER THAN THAT, A STANDARD BOLT SET KIT NEEDS TO BE ORDERED ALONG WITH THE STANDARD ENDCOVER

ROTORS, DRIVE LINKS AND SPACERS, AND BOLTS

WHEN CHANGING MOTOR DISPLACEMENTS, A MATCHING DRIVE LINK KIT AND BOLT SET KIT MUST ALSO BE ORDERED.

EXPLODED VIEW ITEM #	12	12	10	16	16
DISPLACEMENT	STANDARD ROTOR KIT	FREETURN ROTOR KIT	DRIVE LINK KIT	BOLT SET KIT PORTED ENDCOVER OR STANDARD 40 MM [1.59 IN]	BOLT SET KIT STANDARD ENDCOVER 19 MM [.881 IN]
040	270000040	270001040	270014010	270005040	275005040
045	270000045	270001045	270014010	270005045	275005045
060	270000060	270001060	270014009	270005060	275005060
070	270000070	270001070	270014008	270005070	275005070
090	270000090	270001090	270014007	270005090	275005090
100	270000100	270001100	270014006	270005100	275005100
130	270000130	270001130	270014001	270005130	275005130
160	270000160	270001160	270014005	270005160	275005160
200	270000200	270001200	270014004	270005200	275005200
230	270000230	270001230	270014003	270005230	275005230
320	270000320	270001320	270014002	270005320	275005320
400	270000400	270001400	270014002	270005400	275005400

HOUSING KITS

(EXPLODED VIEW ITEM #6)

DESCRIPTION	HOUSING KIT	DESCRIPTION	HOUSING KIT
#A10 - 2-HOLE W/ 1/2" NPT	270013007	#F38 - 4-HOLE W/ 1/2" BSP.F	270013016
#A11 - 2-HOLE W/ 7/8" O-RING	270013004	#F26 - 4-HOLE W/O PORTS	270013009
#A18 - 2-HOLE W/ 1/2" BSP.F	270013006	#W30 - WHEEL MOUNT W/ 1/2" NPT	270013010
#A68 - 2-HOLE W/ 1/2" BSP.F - 7.1 MM [.278 IN] PILOT	270013017	#W31 - WHEEL MOUNT W/ 7/8" O-RING	270013008
#A06 - 2-HOLE W/O PORTS	270013011	#W38 - WHEEL MOUNT W/ 1/2" BSP.F	270013018
#F30 - 4-HOLE W/ 1/2" NPT	270013000	#W26 - WHEEL MOUNT W/O PORTS	270013005
#F31 - 4-HOLE W/ 7/8" O-RING	270013001		

SHAFTS AND RELATED COMPONENTS KITS

SHAFT KITS COME WITH RELATED SHAFT COMPONENTS (i.e. keys, nuts, etc.) TO ORDER INDIVIDUAL KEYS, USE THE KEY KIT NUMBER. TO ORDER NUT KITS (FOR #13 OR #14 SHAFT), SEE MISCELLANEOUS KITS LIST ABOVE.

EXPLODED VIEW ITEM #	22	23
DESCRIPTION	SHAFT KIT	KEY KIT
#10 - 1" STRAIGHT	270011200	270229100
#15 - 1" STRAIGHT EXTENDED	270011202	270229100
#12 - 25MM STRAIGHT (8MM KEY)	270011201	270229101
#89 - 25MM STRAIGHT MODIFIED	270011206	270229101
#14 - 1" TAPERED (SAE STANDARD)	270011301	270229103
#02 - 1" 6B SPLINE	270011600	----
#13 - 1" TAPERED (SHORT VERSION)	270011302	270229102