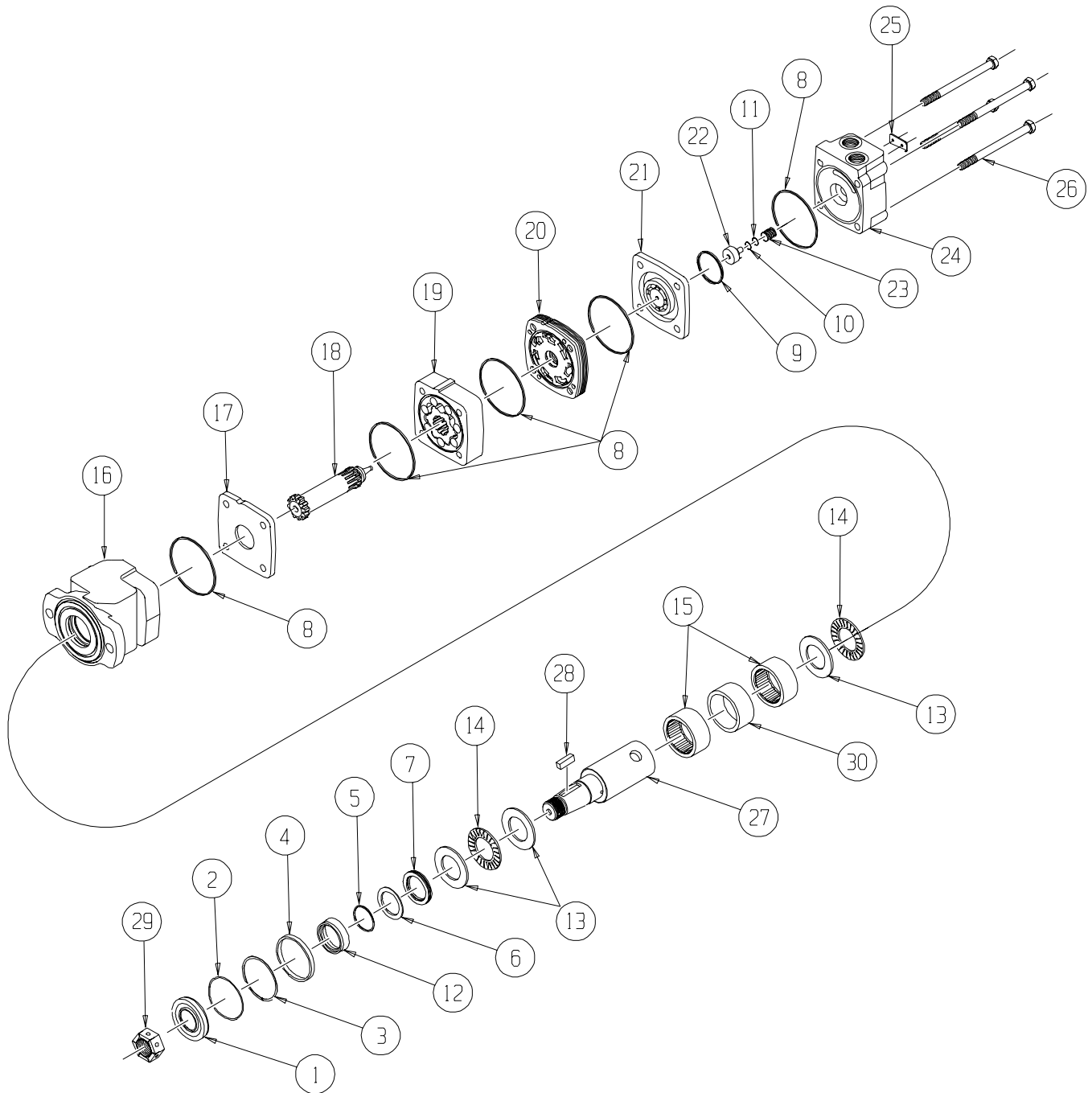


HB (300) Series



HB (300) SERIES MOTOR COMPONENTS

SEAL KIT 300333900

DESCRIPTION	EXP. VIEW ITEM #	KIT
DUST SEAL	1	
WIRE RING	2	
METAL BACKUP SHIM	3	ITEMS # 1-12
HIGH PRESSURE SEAL	4	INCLUDED IN
METAL BACKUP SHIM	5	SEAL KIT
TEFLON BACKUP SEAL	6	300333900
SHAFT SEAL	7	
BODY SEALS (5)	8	
COMMUTATOR SEAL	9	
O-RING SEAL	10	
TEFLON BACKUP SEAL	11	
SEAL CARRIER	12	

MISCELLANEOUS KITS

DESCRIPTION	EXP. VIEW ITEM #	KIT
THRUST WASHER	13	300018054
THRUST BEARING	14	300018052
ROLLER BEARING	15	300018053
BEARING SPACER	30	300018096
WEAR PLATE	17	300012012
MANIFOLD	20	300015008
COMMUTATOR ASSEMBLY	21	300012013
MIDMOUNT COMMUTATOR ASMBLY	NOT SHOWN	300012011
ENDCOVER PISTON	22	300018056
PISTON SPRING	23	300018059
1000 PSI RELIEF VALVE	NOT SHOWN	500018228
2000 PSI RELIEF VALVE	NOT SHOWN	500018231
3000 PSI RELIEF VALVE	NOT SHOWN	500018221
1.00-20 UNEF SLOTTED NUT	29	500449304
1.00-20 UNEF SOLID NUT	29	500449303
PORT PLUG ("???AB" OPTION)	NOT SHOWN	500018186
1.00-20 UNEF LOCK NUT	29	300339303P

ROTORS, DRIVE LINKS AND BOLTS

WHEN CHANGING MOTOR DISPLACEMENTS, A MATCHING ROTOR AND BOLT SET KIT MUST BE ORDERED. A NEW DRIVE LINK KIT MAY BE NECESSARY.

EXPLODED VIEW ITEM #	19	19	18	26	26
DISPLACEMENT	STANDARD ROTOR KIT	FREETURN ROTOR KIT	DRIVE LINK KIT	BOLT SET KIT	BOLT SET KIT FOR ENDCOVERS WITH OFFSET PORTS
050	300332003	300332003F	300014028	300334005	300334004L
080	300332004	300332004F	300014028	300334008	300334012
090	300332005	300332005F	300014028	300334008	300334014
110	300332006	300332006F	300014029	300334010	300334014
125	300332008	300332008F	300014029	300334003L	300334018
160	300332010	300332010F	300014030	300334012	300334012L
200	300332012	300332012F	300014030	300334014	300335110
250	300332014	300332014F	300014027	300334018	300334018L
300	300332018	300332018F	300014027	300335014	300335016
320	355337020	300332020F	300014031	300335114	300334024L
400	300332024	300332024F	300014031	300335114	300334024L

HOUSING KITS

(EXPLODED VIEW ITEM #16)

HOUSING KITS INCLUDE THE FRONT & REAR BEARINGS (#15), 2 THRUST WASHERS & 1 BEARING (#S 13 & 14), & SPACER (#30) INSTALLED IN THE HOUSING. THE REAR THRUST WASHER AND THRUST BEARING ARE INCLUDED IN THE HOUSING KIT.

DESCRIPTION	HOUSING KIT
#M2 & M8- 4-HOLE SQUARE MOUNT (MIDMOUNT)	300130055
#B0 & B7- 2-HOLE SAE B MOUNT	300130050
#F2 & F8- 4-HOLE SQUARE MOUNT	300130055
#A0 & A7- 2-HOLE SAE "A" SYTLE MOUNT	300130056
#W2 & W8- 4-HOLE WHEEL MOUNT	300130057
#A2 & A8- 4-HOLE SAE "A" STYLE MOUNT	300130058
#A4 & A9- 6-HOLE SAE "A" STYLE MOUNT	300130059

SHAFTS AND RELATED COMPONENTS KITS

SHAFT KITS COME WITH RELATED SHAFT COMPONENTS (i.e. keys, nuts, etc.)

TO ORDER INDIVIDUAL SHAFT COMPONENTS (i.e. keys, nuts, bolts, washers or wire rings) USE THE KIT NUMBER FOR EACH INDIVIDUAL PART

EXPLODED VIEW ITEM #	27	28	29	NOT SHOWN	NOT SHOWN	NOT SHOWN
DESCRIPTION	SHAFT KIT	KEY KIT	NUT KIT	BOLT KIT	WASHER KIT	WIRE RING KIT
#01- 13 TOOTH SPLINE	300110050	---	---	---	---	---
#02- 6-B SPLINE	300110052	---	---	---	---	---
#22- 1-1/4" TAPERED	300110053	300339101	---	---	---	---
#20- 1-1/4" STRAIGHT	300110054	300339106	SEE MISC. KITS LIST ABOVE	300339301	300339302	500449201
#23- 14 TOOTH SPLINE	300110055	---	---	---	---	500449201
#10- 1" STRAIGHT	300110056	300339100	---	---	---	---
#12- 25MM STRAIGHT	300110057	300339104	---	---	---	---
#21- 32MM STRAIGHT	300110059	300339103	---	---	---	500449201
#07- 1-1/4" STRAIGHT SPEED SENSOR	300110084	300339106	---	300339301	300339302	500449201
#15- 1" STRAIGHT SPEED SENSOR	300110086	300339100	---	---	---	---
#08- 32mm STRAIGHT SPEED SENSOR	300110089	300339103	---	---	---	500449201

ENDCOVER KITS

(EXPLODED VIEW ITEM #24)

ENDCOVER KITS COME ASSEMBLED WITH EXPLODED VIEW ITEMS # 10, 11, 22 & 23.

TO ORDER A RELIEF VALVE FOR THE VALVE CAVITY ENDCOVERS, SEE THE MISCELLANEOUS KITS LISTING ABOVE FOR RELIEF VALVE KIT #S.

DESCRIPTION	STANDARD ENDCOVER KIT	VALVE CAVITY ENDCOVER KIT	INTERNAL DRAIN ENDCOVER KIT	VALVE CAVITY & INTERNAL DRAIN ENDCOVER KIT
#5- 9/16" O-RING SIDE PORTS	300160000	300160000R	300160000D	---
#6- 1-1/16" O-RING SIDE PORTS	300160001	---	300160001D	---
#7- 1/2" BSP.F SIDE PORTS	300160002	---	300160002D	---
#2- 1/2" BSP.F REAR PORTS	300160003	---	300160003D	300160003DR
#9- 3/8" BSP.F SIDE PORTS	300160004	---	300160004D	---
#1- 7/8" O-RING OFFSET PORTS	300160006	---	300160006D	300160006DR
#1- 7/8" O-RING REAR PORTS	300160007	300160007R	300160007D	300160007DR
#2- 1/2" BSP.F OFFSET PORTS	300160008	---	300160008D	---
#3- 1/2" BSP.F OFFSET MANIFOLD PORTS	300160009	---	300160009D	---