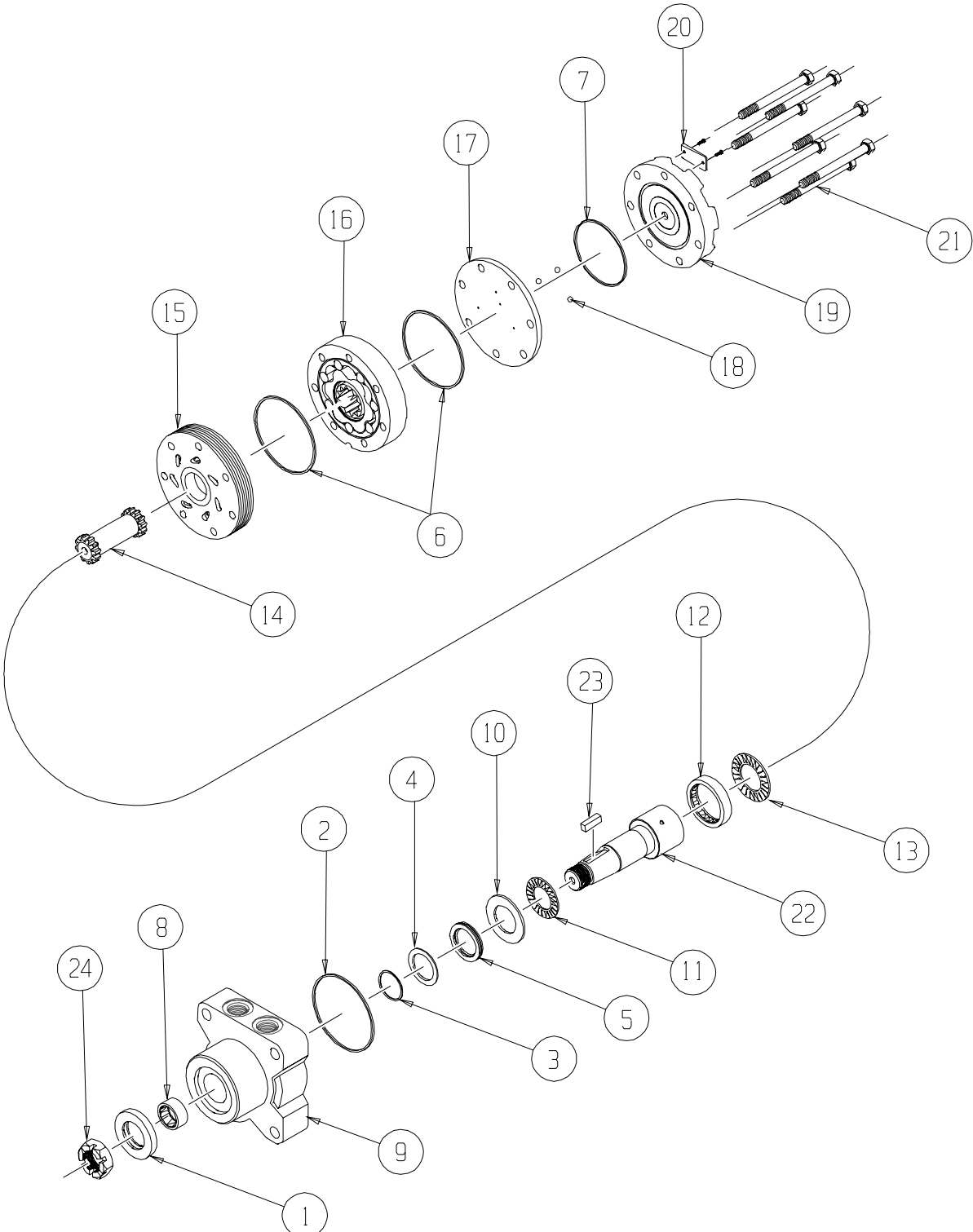


CE (420) Series



CE (420) SERIES MOTOR COMPONENTS

SEAL KIT 400444300

DESCRIPTION	EXP. VIEW ITEM #	KIT
DUST SEAL	1	ITEMS # 1-7 INCLUDED IN SEAL KIT 400444300
REAR HOUSING SEAL	2	
METAL SHIM	3	
BACK-UP SEAL	4	
SHAFT SEAL	5	
BODY SEALS (2)	6	
ENDCOVER SEAL	7	
NOTE: REAR BEARING (#12) MUST BE REMOVED TO REPLACE SEAL KIT ITEMS #1-3. OR FRONT THRUST BEARING AND WASHERS (#9-10). IT IS RECOMMENDED THAT A NEW REAR BEARING BE INSTALLED WHEN ASSEMBLING.		

MISCELLANEOUS KITS

DESCRIPTION	EXP. VIEW ITEM #	KIT
FRONT HOUSING BEARING	8	400018006
FRONT THRUST WASHER	10	500018253
FRONT THRUST BEARING	11	500018252
REAR HOUSING BEARING	12	500018002
REAR THRUST BEARING	13	500018059
FORWARD MANIFOLD (CCW O R"0")	15	500015006
REVERSE MANIFOLD (CW OR "1")	15	500015007
BALANCE PLATE	17	500012001
STEEL BALLS (3)	18	500018048
ENDCOVER	19	500016001
1.00-20 UNEF SOLID NUT	NOT SHOWN	500449303
1.00-20 UNEF LOCK NUT	NOT SHOWN	300339303P
1.00-20 UNEF SLOTTED NUT	24	500449304

ROTORS, DRIVE LINKS AND SPACERS, AND BOLTS

WHEN CHANGING MOTOR DISPLACEMENTS, A MATCHING ROTOR AND BOLT SET KIT MUST BE ORDERED. A NEW DRIVE LINK KIT MAY BE NECESSARY.

EXPLODED VIEW ITEM #	16	16	14	21
DISPLACEMENT	STANDARD ROTOR KIT	FREETURN ROTOR KIT	DRIVE LINK KIT	BOLT SET KIT
120	500087005	500087008	400140007	500445006
160	500137005	500137011	400140007	500445006
200	500167004	500167011	400140012	500445012
230	500147002	500147004	400140014	500445014
260	500227000	500227004	400140016	500445014
300	500247005	500247011	400140018	500445018
350	500207000	500207004	400140020	500445026
375	500307005	500307011	400140024	500445024
470	500357003	500357005	400140020	500445026
540	500407005	500407011	400140032	500445032
750	500607005	500607011	400140045	500445045

HOUSING KITS

HOUSING KITS INCLUDE THE FRONT BEARING (#8), METAL SHIM (#3), BACK-UP SEAL (#4), AND SHAFT SEAL (#5) INSTALLED IN THE HOUSING.

DESCRIPTION	EXPLODED VIEW ITEM #	HOUSING KIT
#W35- SETBACK FLANGE (9/16" O-RING PORTS)	9	400130044
#W38- SETBACK FLANGE (1/2-14 BSP.F PORTS)	9	400130045
#W31- SETBACK FLANGE (7/8-14 O-RING PORTS)	9	400130047
#P38- SETBACK FLANGE 3.25 PILOT (1/2-14 BSP.F PORTS)	9	400130065
#P35- SETBACK FLANGE 3.25 PILOT (9/16-18 BSP.F PORTS)	9	400130064

SHAFTS AND RELATED COMPONENTS KITS

SHAFT KITS COME WITH RELATED SHAFT COMPONENTS (i.e. keys, nuts, etc.)

TO ORDER INDIVIDUAL SHAFT COMPONENTS (i.e. keys, nuts, bolts, washers or wire rings) USE THE KIT NUMBER FOR EACH INDIVIDUAL PART.

EXPLODED VIEW ITEM #	22	23	24
DESCRIPTION	SHAFT KIT	KEY KIT	NUT KIT
#22- 1-1/4" TAPERED	400110043	500449106	SEE MISC.4