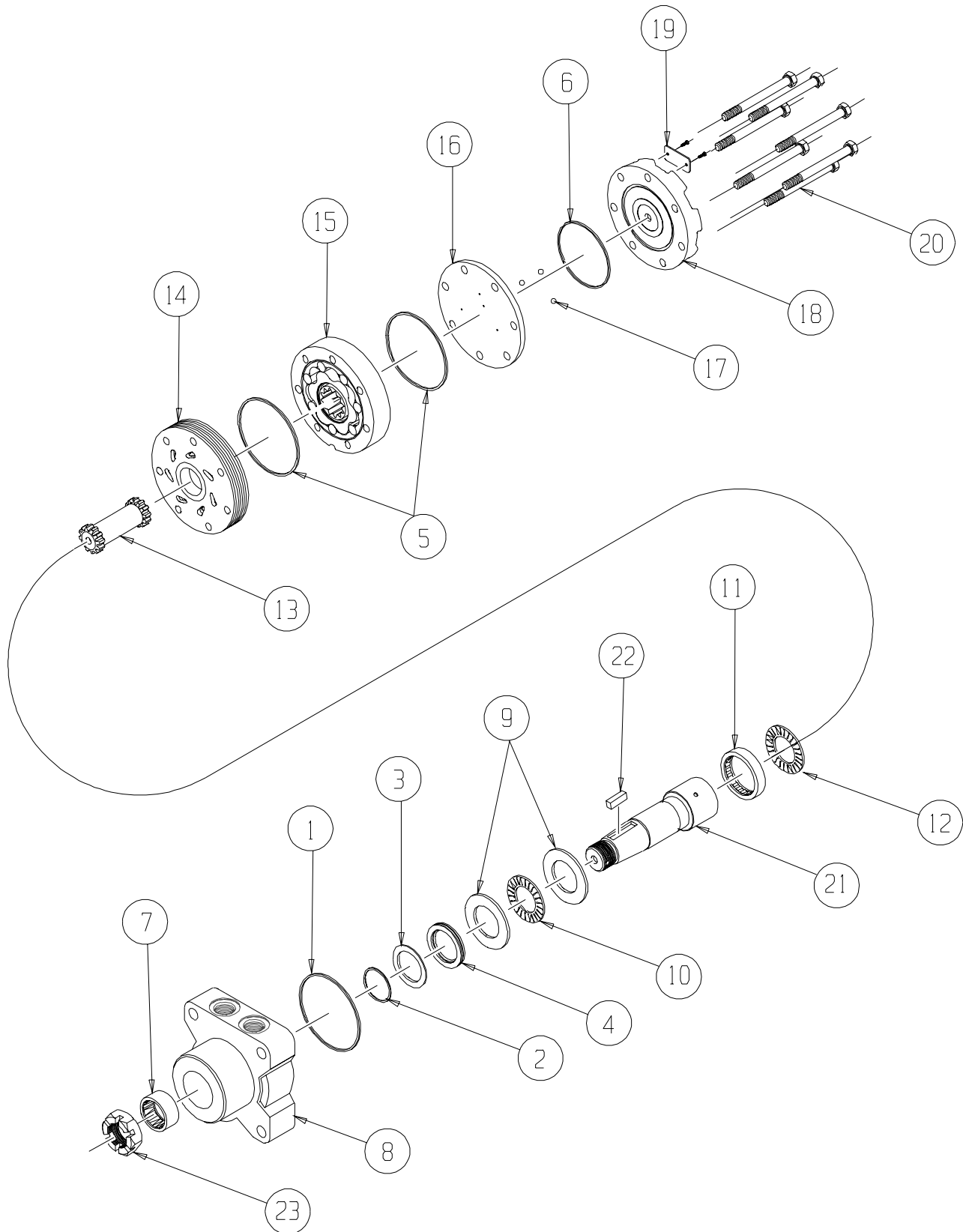


CE (430) Series



CE (430) SERIES MOTOR COMPONENTS

SEAL KIT 400444250

DESCRIPTION	EXP. VIEW ITEM #	KIT
HOUSING SEAL	1	ITEMS # 1-6 INCLUDED IN SEAL KIT 400444250
METAL SHIM	2	
BACK-UP SEAL	3	
SHAFT SEAL	4	
BODY SEALS (2)	5	
ENDCOVER SEAL	6	
NOTE: REAR BEARING (#11) MUST BE REMOVED TO REPLACE SEAL KIT ITEMS #2-4. OR FRONT THRUST BEARING AND WASHERS (#9-10). IT IS RECOMMENDED THAT A NEW REAR BEARING BE INSTALLED WHEN ASSEMBLING.		

MISCELLANEOUS KITS

DESCRIPTION	EXP. VIEW ITEM #	KIT
FRONT HOUSING BEARING	7	500018203
FRONT THRUST WASHER (2)	9	500118002
FRONT THRUST BEARING	10	500118003
REAR HOUSING BEARING	11	500018002
REAR THRUST BEARING	12	500018059
FORWARD MANIFOLD	14	500015006
REVERSE MANIFOLD	14	500015007
BALANCE PLATE	16	500012001
STEEL BALLS (3)	17	500018048
ENDCOVER	18	500016001
1000 PSI RELIEF VALVE	NOT SHOWN	500018228
2000 PSI RELIEF VALVE	NOT SHOWN	500018231
3000 PSI RELIEF VALVE	NOT SHOWN	500018221
1.125 - 18 UNEF SLOTTED HEX NUT	23	700018038
1.125 - 18 UNEF SOLID HEX NUT	23	700018054
M24 X 1.5 SLOTTED HEX NUT (#46)	23	500449306

ROTORS, DRIVE LINKS AND SPACERS, AND BOLTS

WHEN CHANGING MOTOR DISPLACEMENTS, A MATCHING ROTOR AND BOLT SET KIT MUST BE ORDERED. A NEW DRIVE LINK KIT MAY BE NECESSARY.

EXPLODED VIEW ITEM #	15	15	13	20
DISPLACEMENT	STANDARD ROTOR KIT	FREETURN ROTOR KIT	DRIVE LINK KIT	BOLT SET KIT
120	500087005	500087008	400140007	500445006
160	500137005	500137011	400140007	500445006
200	500167004	500167011	400140012	500445012
230	500147002	500147004	400140014	500445014
260	500227000	500227004	400140016	500445014
300	500247005	500247011	400140018	500445018
350	500207000	500207004	400140020	500445026
375	500307005	500307011	400140024	500445024
470	500357003	500357005	400140020	500445026
540	500407005	500407011	400140032	500445032
750	500607005	500607011	400140045	500445045

HOUSING KITS

HOUSING KITS INCLUDE THE FRONT BEARING (#7), METAL SHIM (#2), BACK-UP SEAL(#3), AND SHAFT SEAL (#4) INSTALLED IN THE HOUSING.

DESCRIPTION	EXPLODED VIEW ITEM #	HOUSING KIT
#W31- SETBACK FLANGE (7/8 - 14 PORTS)	8	400130020
#K31- SETBACK FLANGE WITH BRAKE MOUNT (7/8 - 14 PORTS)	8	400130021
#W35- SETBACK FLANGE (9/16 - 18 PORTS)	8	4001300245
#W38- SETBACK FLANGE (1/2 - 14 BSP.F)	8	400130025
#W31- SETBACK FLANGE WITH RELIEF VALVE (7/8 - 14 PORTS)	8	400130050
#K38- WHEEL MOUNT W/BRAKE MOUNT (1/2"-14 BSP.F PORTS)	8	400130055
#W38- WHEEL MOUNT W/VALVE CAVITY (1/2"-14 BSP.F PORTS)	8	400130056

SHAFTS AND RELATED COMPONENTS KITS

SHAFT KITS COME WITH RELATED SHAFT COMPONENTS (i.e. keys, nuts, etc.)

TO ORDER INDIVIDUAL SHAFT COMPONENTS (i.e. keys, nuts, bolts, washers or wire rings) USE THE KIT NUMBER FOR EACH INDIVIDUAL PART.

EXPLODED VIEW ITEM #	21	22	23
DESCRIPTION	SHAFT KIT	KEY KIT	NUT KIT
#31- 1-1/2" TAPERED	400110031	500449106	SEE MISC.
#28- 35MM TAPERED	400110053	500449104	KITS LIST