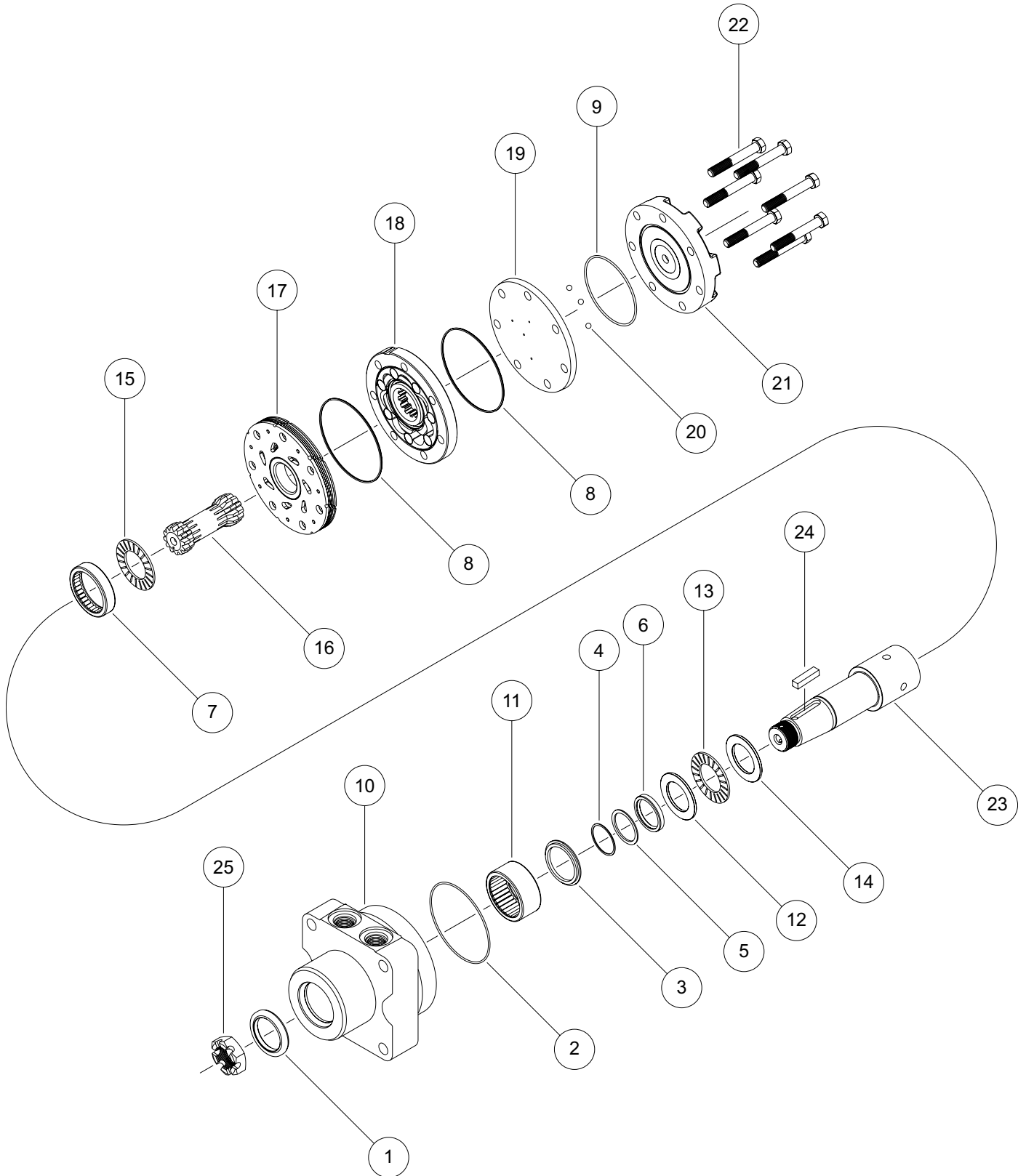


# RE (535) Series



# RE (535) SERIES MOTOR COMPONENTS

## SEAL KITS

DESCRIPTION	EXP. VIEW ITEM #	KIT
DUST SEAL	1	
HOUSING SEAL	2	
BACK UP RING	3	
BACK UP SHIM	4	ITEMS # 1-9
BACK UP SEAL	5	INCLUDED IN
SHAFT SEAL	6	SEAL KIT
REAR HOUSING BEARING	7	500444535
BODY SEAL (2)	8	
ENDCOVER SEAL	9	

## MISCELLANEOUS KITS

DESCRIPTION	EXPLODED VIEW ITEM #	KIT
FRONT HOUSING BEARING	11	530018000
FRONT THRUST WASHER	12	500018283
FRONT THRUST BEARING	13	500018282
THRUST WASHER	14	300018002
REAR THRUST BEARING	15	500018059
STANDARD MANIFOLD	17	500015006
REVERSE TIMED MANIFOLD	17	500015007
BALANCE PLATE (3 BALLS INCLD)	19	500012001
STEEL BALL	20	500018048
ENDCOVER	21	500016001

## ROTORS, DRIVE LINKS AND SPACERS, AND BOLTS

WHEN CHANGING MOTOR DISPLACEMENTS, A MATCHING ROTOR AND BOLT SET KIT MUST BE ORDERED. A NEW DRIVE LINK KIT MAY BE NECESSARY. DRIVE LINK SPACERS ARE INCLUDED IN DRIVE LINK KITS, BUT MAY ALSO BE ORDERED SEPERATELY BY USING THE DRIVE LINK SPACER KIT NUMBER.

EXPLODED VIEW ITEM #	18	18	16	22
DISPLACEMENT	STANDARD ROTOR KIT	FREETURN ROTOR KIT	DRIVE LINK KIT	BOLT SET KIT
200	500167004	---	535014001	500445012
230	500147002	---	535014002	500445014
300	500247005	---	535014003	500445018
375	500307005	---	535014004	500445024

## HOUSING KITS

(EXPLODED VIEW ITEM #10)

HOUSING KITS INCLUDE FRONT HOUSING BEARING (#11) INSTALLED IN THE HOUSING.

DESCRIPTION	HOUSING KIT
#T31- WHEEL MOTOR WITH 7/8" O-RING	535013054

## SHAFTS AND RELATED COMPONENTS KITS

SHAFT KITS COME WITH RELATED SHAFT COMPONENTS (i.e. keys, nuts, etc.)

EXPLODED VIEW ITEM #	23	24	25
DESCRIPTION	SHAFT KIT	KEY KIT	NUT KIT
#22 1-1/4" TAPERED	535011001	255018201	500449304
#31 1-1/2" TAPERED	535011000	500449105	700018038