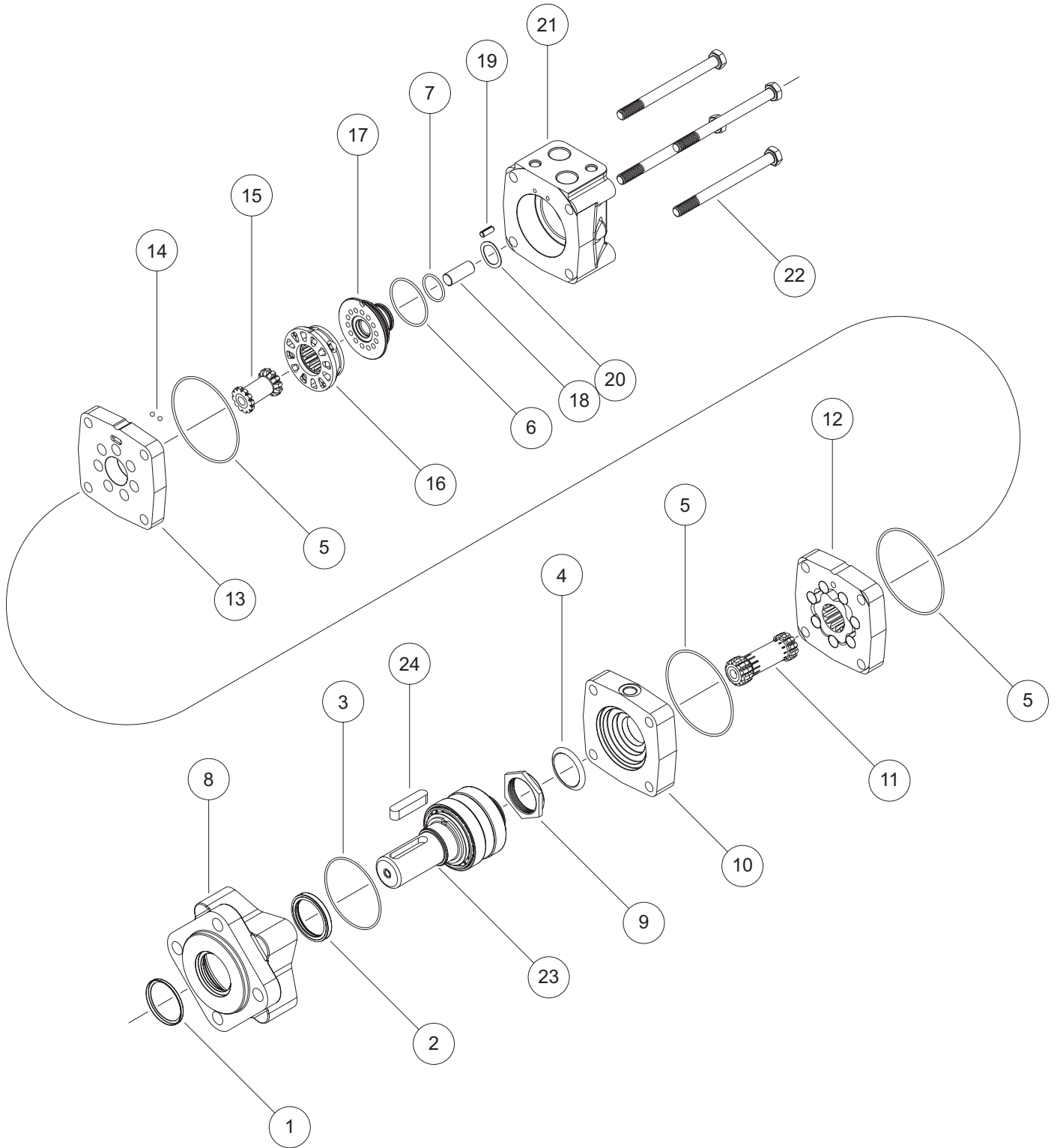


WS (360) Series



WS (360) SERIES MOTOR COMPONENTS

SEAL KIT 360360001

DESCRIPTION	EXP. VIEW ITEM #	KIT
DUST SEAL	1	ITEMS # 1-7 INCLUDED IN SEAL KIT 360360001
SHAFT SEAL	2	
HOUSING SEAL	3	
BUTTERFLY SEAL	4	
BODY SEAL (3)	5	
LARGE PISTON SEAL	6	
SMALL PISTON SEAL	7	

MISCELLANEOUS KITS

DESCRIPTION	EXP. VIEW ITEM #	KIT
SHAFT LOCK NUT	9	360018413
WEAR PLATE (1/4-19 BSPF PORT)	10	360012402
WEAR PLATE (7/16-20 O-RING PORT)	10	360012403
MANIFOLD	13	360015401
STEEL BALL (2)	14	360018417
DRIVER	15	360014400
COMMUTATOR	16	360012401
PISTON	17	360018406
SPACER	18	360018410
PIN	19	360018405
WAVE SPRING	20	360018409

ROTORS, DRIVE LINKS AND BOLTS

WHEN CHANGING MOTOR DISPLACEMENTS, A MATCHING ROTOR AND BOLT SET KIT MUST BE ORDERED. A NEW DRIVE LINK KIT MAY BE NECESSARY.

EXPLODED VIEW ITEM #	12	11	22
DISPLACEMENT	STANDARD ROTOR KIT	DRIVE LINK KIT	BOLT SET KIT
080	360080006	360014401	360335080
100	360100006	360014402	360335125
125	360125006	360014402	360335125
160	360160006	360014403	360335160
200	360200006	360014404	360335200
230	360230006	360014409	360335230
250	360250006	360014405	360335250
315	360315006	360014406	360335315
400	360400006	360014407	360335400
500	360500006	360014408	360335500

HOUSING KITS

(EXPLODED VIEW ITEM #8)

DESCRIPTION	HOUSING KIT
A7 2-HOLE SAE A MOUNT	360013405
A9 6-HOLE MAGNETO MOUNT	360013406
AH 4-HOLE SAE A MOUNT	360013401
AU 4-HOLE SQUARE EURO MOUNT	360013408
B7 2-HOLE SAE B MOUNT	360013407
W8 4-HOLE WHEEL MOUNT (5.00" PILOT)	360013402
Z8 4-HOLE WHEEL MOUNT (125MM PILOT)	360013403

SHAFT / BEARING KITS

SHAFT / BEARING KITS COME WITH ALL RELATED SHAFT COMPONENTS (ie. KEYS, NUTS, BOLTS, WASHERS, ETC.)

TO ORDER INDIVIDUAL SHAFT COMPONENTS (i.e. keys, nuts) USE THE KIT NUMBER FOR EACH INDIVIDUAL PART

EXPLODED VIEW ITEM #	23	24	NOT SHOWN
DESCRIPTION	SHAFT KIT	KEY KIT	NUT KIT
#10 1" STRAIGHT	360011403	360018419	---
#12 25MM STRAIGHT	360011413	355018046	---
#20 1-1/4" STRAIGHT	360011402	360018418	---
#21 32MM STRAIGHT	360011401	355018047	---
#23 14 TOOTH SPLINE, 3/8" TAP	360011405	---	---
#28 35MM TAPERED	360011408	355018048	355018070
#31 1-1/2" TAPERED	360011411	500449102	700018038
#G4 1" 6B SPLINE	360011406	---	---
#N3 14 TOOTH SPLINE, M8 TAP	360011404	---	---
#N5 1-1/4" TAPERED	360011409	360018418	500449304

ENDCOVER KITS

(EXPLODED VIEW ITEM #21)

ENDCOVER KITS COME ASSEMBLED WITH EXPLODED VIEW ITEMS # 6, 7, 17 & 20.

DESCRIPTION	STANDARD ENDCOVER KIT
#1 7/8-14 OFFSET MANIFOLD (SIDE PORTS)	360016402
#3 G 1/2 OFFSET MANIFOLD (SIDE PORTS)	360016401