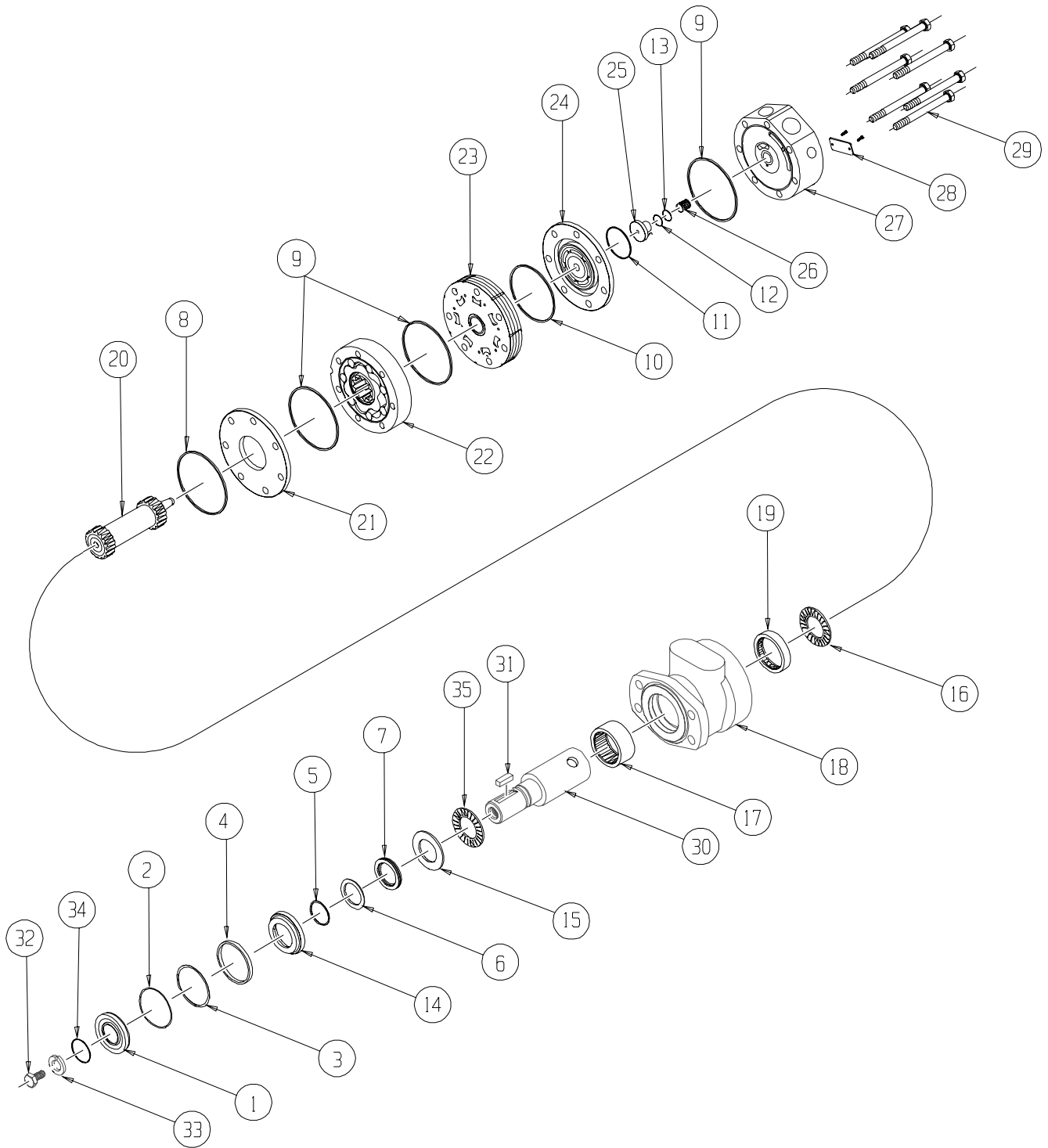


DR (600) Series



DR (600) SERIES MOTOR COMPONENTS

SEAL KIT 600555000

DESCRIPTION	EXP. VIEW ITEM #	KIT
DUST SEAL	1	
SPLIT WIRE RING	2	
METAL BACKUP SHIM	3	ITEMS #1-13
HIGH PRESSURE SEAL	4	INCLUDED IN
METAL BACKUP SHIM	5	SEAL KIT
POLYAMIDE SEAL	6	600555000
SHAFT SEAL	7	
REAR HOUSING SEAL	8	
BODY SEALS (3)	9	
MANIFOLD SEAL	10	
COMMUTATOR SEAL	11	
O-RING SEAL	12	
TEFLON BACKUP SEAL	13	
SEAL CARRIER	14	ITEMS #14-15
THRUST WASHER	15	INCLUDED IN SEAL KIT 500444003

MISCELLANEOUS KITS

DESCRIPTION	EXP. VIEW ITEM #	KIT
REAR THRUST BEARING	16	500018059
FRONT HOUSING BEARING (1" WIDE)	17	500018003
REAR HOUSING BEARING (.5" WIDE)	19	500018002
DIVIDER PLATE	21	500012004
MANIFOLD	23	700668002
COMMUTATOR ASSEMBLY	24	700668003
ENDCOVER PISTON	25	700668004
PISTON SPRING	26	700018046
FRONT THRUST BEARING	35	500018252
1000 PSI RELIEF VALVE	NOT SHOWN	500018228
2000 PSI RELIEF VALVE	NOT SHOWN	500018231
3000 PSI RELIEF VALVE	NOT SHOWN	500018221
7/8" O-RING PORT PLUG	NOT SHOWN	700018021
1.00-20 UNEF SLOTTED NUT	NOT SHOWN	500449304
1.00-20 UNEF SOLID NUT	NOT SHOWN	500449303
1.00-20 UNEF LOCK NUT	NOT SHOWN	300339303P

ROTORS, DRIVE LINKS, AND BOLTS

WHEN CHANGING MOTOR DISPLACEMENTS, A MATCHING ROTOR, DRIVE LINK AND BOLT SET KIT MUST BE ORDERED

EXPLODED VIEW ITEM #	22	22	20	29
DISPLACEMENT	STANDARD ROTOR KIT	FREETURN ROTOR KIT	DRIVE LINK KIT	BOLT SET KIT
200	500167004	500167011	600140012	700664012
260	500227000	500227004	600140016	700664019
300	500247005	500247011	600140019	700664025
350	500207000	500207004	600140027	700665028
375	500307005	500307011	600140025	700664028
470	500357003	500357005	600140027	700665028
540	500407005	500407011	600140033	700665033
750	500607005	500607011	600140046	700665046

HOUSING KITS

(EXPLODED VIEW ITEM #18)

STANDARD HOUSING KITS INCLUDE THE FRONT BEARING (#17) AND THE REAR BEARING (#19) INSTALLED IN THE HOUSING

DESCRIPTION	HOUSING KIT
#W2 & W8- WHEEL MOUNT FLANGE	500130723
#A2 & A8- 4-HOLE SAE "A" STYLE	500130823
#K2 & K8- WHEEL MOUNT WITH BRAKE MOUNT	500131123
#A0 & A7- 2-HOLE SAE "A" STYLE	500131623
#A4 & A9- 6-HOLE SAE "A" STYLE	500131823
*NOTE- ALL HOUSINGS REQUIRE THE USE OF (2) 7/8" O-RING PORT PLUGS- SEE MISC. KITS ABOVE FOR KIT NUMBER.	

SHAFTS AND RELATED COMPONENTS KITS

SHAFT KITS COME WITH RELATED SHAFT COMPONENTS (i.e. keys, nuts, etc

TO ORDER INDIVIDUAL SHAFT COMPONENTS (i.e. keys, nuts, bolts, washers or wire rings) USE THE KIT NUMBER FOR EACH INDIVIDUAL PART

EXPLODED VIEW ITEM #	30	31	NOT SHOWN	32	33	34
DESCRIPTION	SHAFT KIT	KEY KIT	NUT KIT	BOLT KIT	WASHER KIT	WIRE RING KIT
#02- 6-B SPLINE	500011600	---	---	---	---	---
#22- 1-1/4" TAPERED	500011300	500449101	---	---	---	---
#20- 1-1/4" STRAIGHT	500011200	500449102	SEE MISC. KITS LIST ABOVE	500449301	500449302	500449201
#23- 14 TOOTH SPLINE	500011101	---	---	---	---	500449201
#06- 1" STRAIGHT	500011201	500449100	---	---	---	---
#12- 25MM STRAIGHT	500011109	500449104	---	---	---	---
#24- 19 TOOTH SPLINE	500011102	---	---	---	---	500449201
#21- 32MM STRAIGHT	500011203	500449103	---	---	---	500449201

ENDCOVER KITS

(EXPLODED VIEW ITEM #27)

ENDCOVER KITS COME ASSEMBLED WITH EXPLODED VIEW ITEMS # 12, 13, 25 & 26

TO ORDER A RELIEF VALVE FOR THE VALVE CAVITY ENDCOVERS, SEE THE MISCELLANEOUS KITS LISTING ABOVE FOR RELIEF VALVE KIT #

DESCRIPTION	STANDARD ENDCOVER KIT	VALVE CAVITY ENDCOVER KIT	INTERNAL DRAIN ENDCOVER KIT	VALVE CAVITY & INTERNAL DRAIN ENDCOVER KIT
#1- 7/8" O-RING REAR PORTS	700160000	700160000R	700160000D	700160000DR
#3- MANIFOLD PORTS, D-SHAPED	---	---	700160003D	---
#5- 1-1/16" O-RING RADIAL PORTS	700160005	700160005R	700160005D	700160005DR
#2- 3/4" BSP.F RADIAL PORTS	700160007	700160007R	700160007D	700160007DR
#6- 1-1/16" O-RING PARALLEL PORTS	700160008	700160008R	---	---
#7- 3/4" BSP.F PARALLEL PORTS	700160009	---	---	---