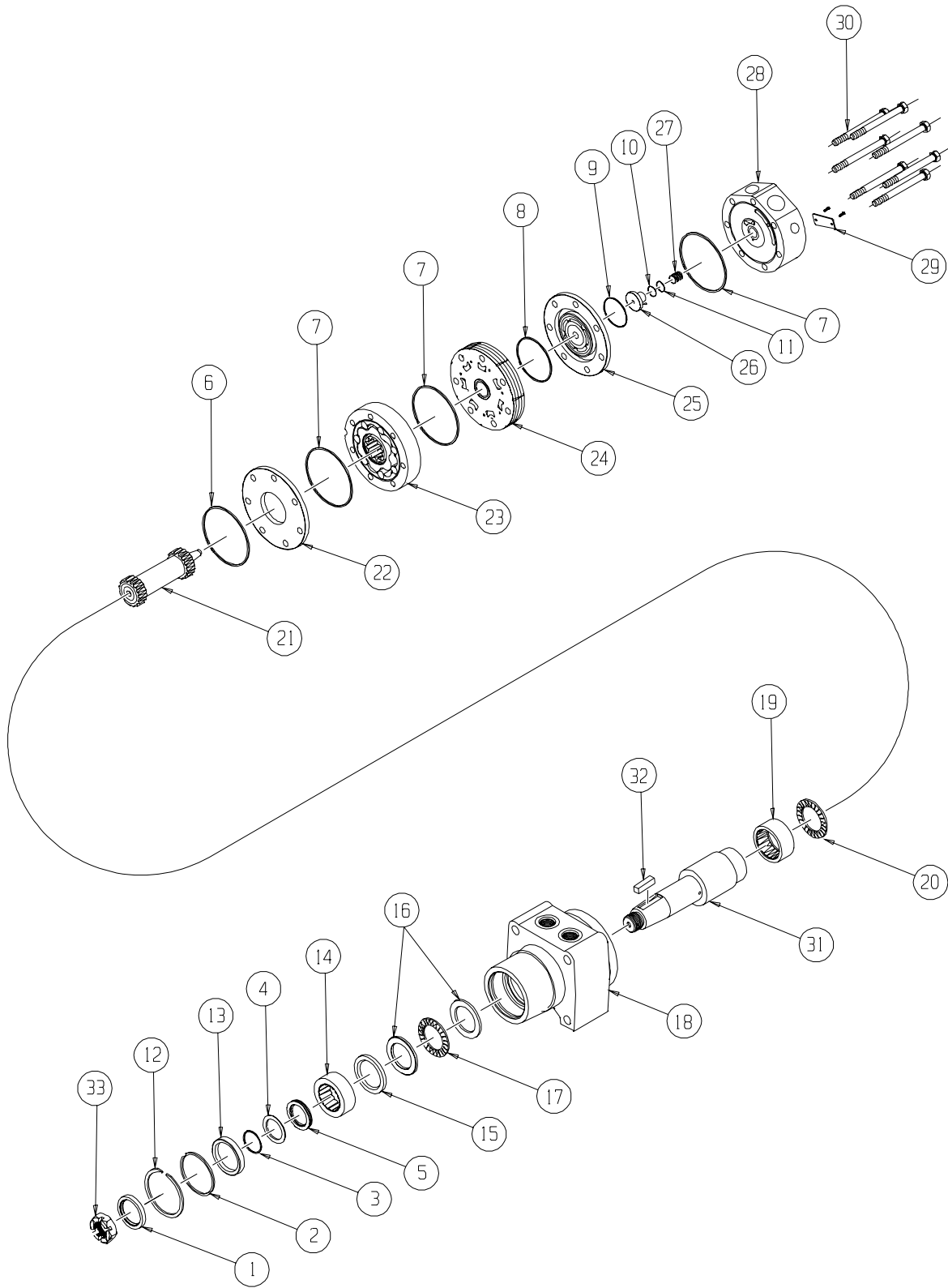


# DR (630) Series



# DR (630) SERIES MOTOR COMPONENTS

## SEAL KIT 600555100

DESCRIPTION	EXP. VIEW ITEM #	KIT
DUST SEAL	1	
HIGH PRESSURE SEAL	2	
METAL BACKUP SHIM	3	ITEMS #1-11
TEFLON BACKUP SEAL	4	INCLUDED IN
SHAFT SEAL	5	SEAL KIT
REAR HOUSING SEAL	6	600555100
BODY SEALS (3)	7	
MANIFOLD SEAL	8	
COMMUTATOR SEAL	9	
O-RING SEAL	10	
TEFLON BACKUP SEAL	11	

## MISCELLANEOUS KITS

DESCRIPTION	EXP. VIEW ITEM #	KIT
RETAINING SNAP RING	12	500018249
SEAL CARRIER	13	500018238
1.5" BEARING	14	500018242
BEARING SPACER	15	500018248
THRUST WASHER	16	700018041
FRONT THRUST BEARING	17	700018033
REAR HOUSING BEARING	19	700018012
REAR THRUST BEARING	20	500018059
DIVIDER PLATE	22	500012004
MANIFOLD	24	700668002
COMMUTATOR ASSEMBLY	25	700668003
ENDCOVER PISTON	26	700668004
PISTON SPRING	27	700018046
7/8" O-RING PORT PLUG	NOT SHOWN	700018021
1000 PSI RELIEF VALVE	NOT SHOWN	500018228
2000 PSI RELIEF VALVE	NOT SHOWN	500018231
3000 PSI RELIEF VALVE	NOT SHOWN	500018221
1.00-20 UNEF SLOTTED NUT	33	500449304
1.00-20 UNEF SOLID NUT	33	500449303
1.00-20 UNEF PACK NUT	33	300339303P
1.125-18 UNEF SLOTTED NUT	33	700018038
1.125-18 UNEF SOLID NUT	33	700018054
M24 X 1.5 SLOTTED HEX NUT (#46)	33	500449306

## ROTORS, DRIVE LINKS, AND BOLTS

WHEN CHANGING MOTOR DISPLACEMENTS, A MATCHING ROTOR, DRIVE LINK AND BOLT SET KIT MUST BE ORDERED

EXPLODED VIEW ITEM #	23	23	21	30
DISPLACEMENT	STANDARD ROTOR KIT	FREETURN ROTOR KIT	DRIVE LINK KIT	BOLT SET KIT
200	500167004	500167011	600140012	700664012
260	500227000	500227004	600140016	700664019
300	500247005	500247011	600140019	700664025
350	500207000	500207004	600140027	700665028
375	500307005	500307011	600140025	700664028
470	500357003	500357005	600140027	700665028
540	500407005	500407011	600140033	700665033
750	500607005	500607011	600140046	700665046

## HOUSING KITS (EXPLODED VIEW ITEM #18)

STANDARD HOUSING KITS INCLUDE THE REAR BEARING (#19) INSTALLED IN THE HOUSING

DESCRIPTION	HOUSING KIT
#W2 & W8- WHEEL MOUNT	500136728
*NOTE- THIS HOUSING REQUIRES THE USE OF (2) 7/8" O-RING PORT PLUGS- SEE MISC. KITS ABOVE FOR KIT NUMBER.	

## SHAFTS AND RELATED COMPONENTS KITS

SHAFT KITS COME WITH RELATED SHAFT COMPONENTS (i.e. keys, nuts, etc

TO ORDER INDIVIDUAL SHAFT COMPONENTS (i.e. keys, nuts, bolts, washers or wire rings) USE THE KIT NUMBER FOR EACH INDIVIDUAL PART

EXPLODED VIEW ITEM #	31	32	33	NOT SHOWN
DESCRIPTION	SHAFT KIT	KEY KIT	NUT KIT	WIRE RING KIT
#31- 1-1/2" TAPERED	500011216	500449105	SEE MISC. KITS LIST	---
#22- 1-1/4" TAPERED	500011300	500449101	ABOVE	---
#30- 1-1/2" STRAIGHT	500011218	300339105		500449200
#28- 35MM TAPERED	500011310	500449104		---

## ENDCOVER KITS (EXPLODED VIEW ITEM #28)

ENDCOVER KITS COME ASSEMBLED WITH EXPLODED VIEW ITEMS # 10, 11, 26 & 27

TO ORDER A RELIEF VALVE FOR THE VALVE CAVITY RELIEF PORT ENDCOVERS, SEE THE MISCELLANEOUS KITS LISTING ABOVE FOR RELIEF VALVE KIT #

DESCRIPTION	STANDARD ENDCOVER KIT	VALVE CAVITY ENDCOVER KIT	INTERNAL DRAIN ENDCOVER KIT	VALVE CAVITY & INTERNAL DRAIN ENDCOVER KIT
#1- 7/8" O-RING REAR PORTS	700160000	700160000R	700160000D	700160000DR
#3- MANIFOLD PORTS, D-SHAPED	---	---	700160003D	---
#5- 1-1/16" O-RING RADIAL PORTS	700160005	700160005R	700160005D	700160005DR
#2- 3/4" BSP.F RADIAL PORTS	700160007	700160007R	700160007D	700160007DR
#6- 1-1/16" O-RING PARALLEL PORTS	700160008	700160008R	---	---
#7- 3/4" BSP.F PARALLEL PORTS	700160009	---	---	---