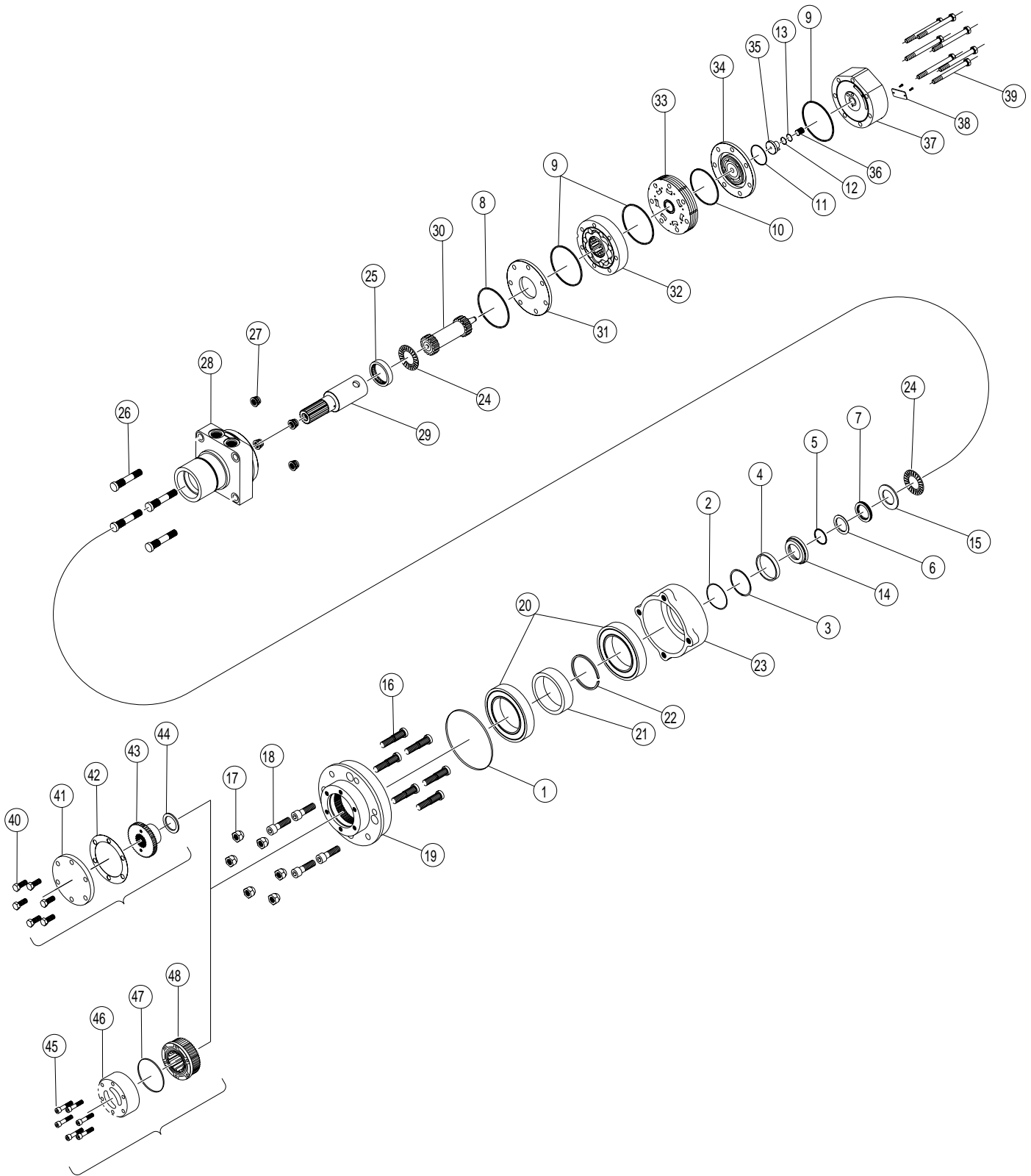


DR (640) Series



DR (640) SERIES MOTOR COMPONENTS

SEAL KIT 70066252

DESCRIPTION	EXP.VIEW ITEM #	KIT
FLANGE SEAL	1	
WIRE RING	2	
METAL BACKUP SHIM	3	ITEMS #1-13,42
HIGH PRESSURE SEAL	4	INCLUDED IN
METAL BACKUP SHIM	5	SEAL KIT
TEFLON BACKUP SEAL	6	PT666252
SHAFT SEAL	7	
REAR HOUSING SEAL	8	
BODY SEALS (3)	9	
MANIFOLD SEAL	10	
COMMUTATOR SEAL	11	
O-RING SEAL	12	
TEFLON BACKUP SEAL	13	
PAPER GASKET	42	
SEAL CARRIER	14	ITEMS #14-15
THRUST WASHER	15	INCLUDED IN SEAL KIT 500444003

MISCELLANEOUS KITS

DESCRIPTION	EXP. VIEW ITEM #	KIT
STUD	16	500018081
LUG NUT	17	500018151
(4) CAPSCREWS	18	500018086
WHEEL FLANGE	19	500013035
125MM BEARING	20	500018095
BEARING SPACER	21	500018194
THRUST RING	22	500018062
BEARING HUB	23	500013055
THRUST BEARING	24	500018059
REAR HOUSING BEARING	25	500018002
PLANETARY MOUNT STUD	26	500018081
MOUNTING NUT	27	500018112
DIVIDER PLATE	31	500012004
MANIFOLD	33	700668002
COMMUTATOR ASSEMBLY	34	700668003
ENDCOVER PISTON	35	700668004
PISTON SPRING	36	700018046
DRIVER COVER SCREWS (6)	40	500018085
DRIVER COVER	41	700018001
DRIVER	43	500018179
WARN HUB ASSEMBLY	44 - 47	500018099
7/8" O-RING PORT PLUG	NOT SHOWN	700018021

ROTORS, DRIVE LINKS, AND BOLTS

WHEN CHANGING MOTOR DISPLACEMENTS, A MATCHING ROTOR, DRIVE LINK AND BOLT SET KIT MUST BE ORDERED

EXPLODED VIEW ITEM #	32	32	30	39
DISPLACEMENT	STANDARD ROTOR KIT	FREETURN ROTOR KIT	DRIVE LINK KIT	BOLT SET KIT
200	500167004	500167011	600140012	700664012
260	500227000	500227004	600140016	700664019
300	500247005	500247011	600140019	700664025
350	500207000	500207004	600140027	700665028
375	500307005	500307011	600140025	700664028
470	500357003	500357005	600140027	700665028
540	500407005	500407011	600140033	700665033
750	500607005	500607011	600140046	700665046

HOUSING KITS (EXPLODED VIEW ITEM #28)

STANDARD HOUSING KITS INCLUDE REAR BEARING (#25) INSTALLED IN THE HOUSING.

DESCRIPTION	HOUSING KIT
#W2 & W8- SETBACK W/ 7/8" O-RING	500131023
*NOTE- ALL HOUSINGS REQUIRE THE USE OF (2) 7/8" O-RING PORT PLUGS- SEE MISC. KITS ABOVE FOR KIT NUMBER.	

INTERNAL SHAFT

SHAFT KITS COME WITH RELATED SHAFT COMPONENTS (i.e. keys, nuts, etc.)

EXPLODED VIEW ITEM #	29
DESCRIPTION	SHAFT KIT
#24- 19 TOOTH SPLINED	500011102

ENDCOVER KITS (EXPLODED VIEW ITEM #37)

ENDCOVER KITS COME ASSEMBLED WITH EXPLODED VIEW ITEMS # 12, 13, 35 & 36.

TO ORDER A RELIEF VALVE FOR THE RELIEF PORT ENDCOVERS, SEE THE MISCELLANEOUS KITS LISTING ABOVE FOR RELIEF VALVE KIT #S.

DESCRIPTION	STANDARD ENDCOVER KIT	RELIEF PORT ENDCOVER KIT	SHUTTLE VALVE ENDCOVER KIT	RELIEF PORT & SHUTTLE VALVE ENDCOVER KIT
#1- 7/8" O-RING REAR PORTS	700160000	700160000R	700160000D	700160000DR
#3- MANIFOLD PORTS, D-SHAPED	---	---	700160003D	---
#5- 1-1/16" O-RING RADIAL PORTS	700160005	700160005R	700160005D	700160005DR
#2- 3/4" BSP.F RADIAL PORTS	700160007	700160007R	700160007D	700160007DR
#6- 1-1/16" O-RING PARALLEL PORTS	700160008	700160008R	---	---
#7- 3/4" BSP.F PARALLEL PORTS	700160009	---	---	---