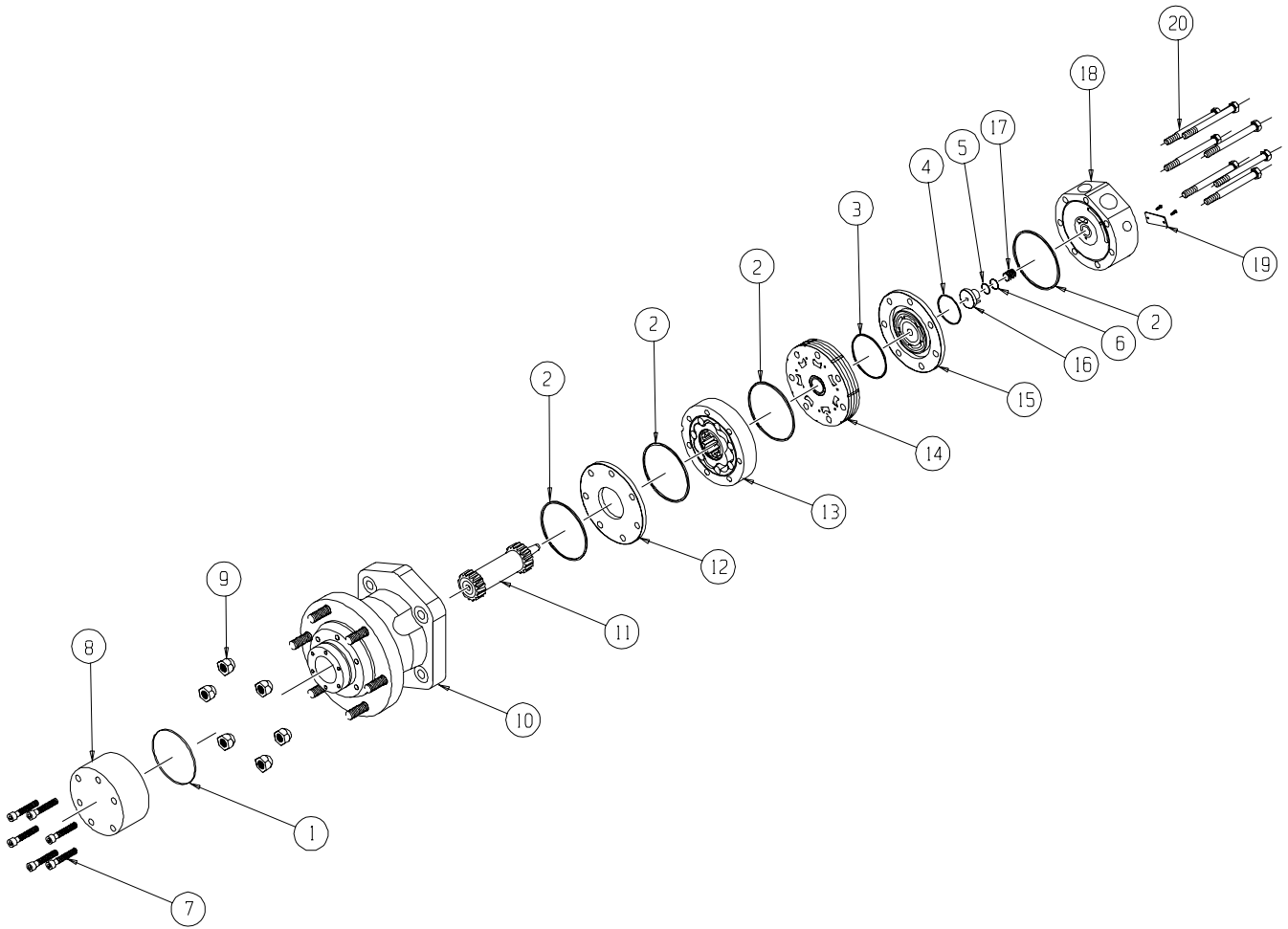


DT 40 (740) Series



DT (740) SERIES MOTOR COMPONENTS

SEAL KIT 700666300

DESCRIPTION	EXP. VIEW ITEM #	KIT
CAP SEAL	1	
BODY SEALS (4)	2	
MANIFOLD SEAL	3	ITEMS # 1-6
COMMUTATOR SEAL	4	INCLUDED IN
O-RING SEAL	5	SEAL KIT
BACKUP SEAL	6	700666300

MISCELLANEOUS KITS

DESCRIPTION	EXP. VIEW ITEM #	KIT
CAPSCREW	7	700018123
FLANGE CAP	8	700018122
LUG NUT	9	500018151
DIVIDER PLATE	12	700012000
MANIFOLD	14	700668002
COMMUTATOR ASSEMBLY	15	700668003
ENDCOVER PISTON	16	700668004
PISTON SPRING	17	700018046
1000 PSI RELIEF VALVE	NOT SHOWN	500018228
2000 PSI RELIEF VALVE	NOT SHOWN	500018231
3000 PSI RELIEF VALVE	NOT SHOWN	500018221

ROTORS, DRIVE LINKS, AND BOLTS

WHEN CHANGING MOTOR DISPLACEMENTS, A MATCHING ROTOR, DRIVE LINK, AND BOLT SET KIT MUST BE ORDERED.

EXPLODED VIEW ITEM #	13	13	11	20
DISPLACEMENT	STANDARD ROTOR KIT	FREETURN ROTOR KIT	DRIVE LINK KIT	BOLT SET KIT
300	700662019	700662019F	700140019	700665019
375	700662025	700662025F	700140025	700665025
470	700662028	700662028F	700140028	700665028
540	700662033	700662033F	700140033	700665033
750	700662046	700662046F	700140046	700665046
930	700662056	---	700140056	700665056
1K1	700662066	700662066F	700140066	700665066
1K5	700662091	---	700140091	700665091
2K1	700662099	---	700140099	700665099

HOUSING / HUB ASSEMBLY KITS

*NOTE: BECAUSE OF THE SPECIAL TOOLS AND FIXTURES REQUIRED, THE HOUSING/HUB ASSEMBLY IS NOT FIELD SERVICEABLE FOR REPAIR WORK, THE HOUSING/HUB ASSEMBLY MUST BE RETURNED TO THE FACTORY. TO INSURE THE FASTEST POSSIBLE TURN AROUND TIME, PLEASE CONTACT THE WHITE HYDRAULICS TECHNICAL SUPPORT DEPARTMENT AT 800-323-7298 FOR RETURN INSTRUCTIONS. FOR BREAKDOWN SITUATIONS REQUIRING IMMEDIATE REPAIRS, NEW HOUSING / HUB ASSEMBLIES ARE AVAILABLE FOR IMMEDIATE SHIPMENT.

DESCRIPTION	EXP. VIEW ITEM #	HOUSING KIT
#W2 & W8- HOUSING / HUB ASSEMBLY - 6.00 Dia. B.C.	10	700134140

ENDCOVER KITS

(EXPLODED VIEW ITEM #18)

ENDCOVER KITS COME ASSEMBLED WITH EXPLODED VIEW ITEMS # 5, 6, 16 & 17.

TO ORDER A RELIEF VALVE FOR THE VALVE CAVITY ENDCOVERS, SEE THE MISCELLANEOUS KITS LISTING ABOVE FOR RELIEF VALVE KIT #'S

DESCRIPTION	STANDARD ENDCOVER KIT	VALVE CAVITY ENDCOVER KIT	INTERNAL DRAIN ENDCOVER KIT	VALVE CAVITY & INTERNAL DRAIN ENDCOVER KIT
#1- 7/8" O-RING REAR PORTS	700160000	700160000R	700160000D	700160000DR
#5- 1-1/16" O-RING RADIAL PORTS	700160005	700160005R	700160005D	700160005DR
#2- 3/4" BSP.F RADIAL PORTS	700160007	700160007R	700160007D	700160007DR
#6- 1-1/16" O-RING PARALLEL PORTS	700160008	700160008R	---	---
#7- 3/4" BSP.F PARALLEL PORTS	700160009	---	---	---