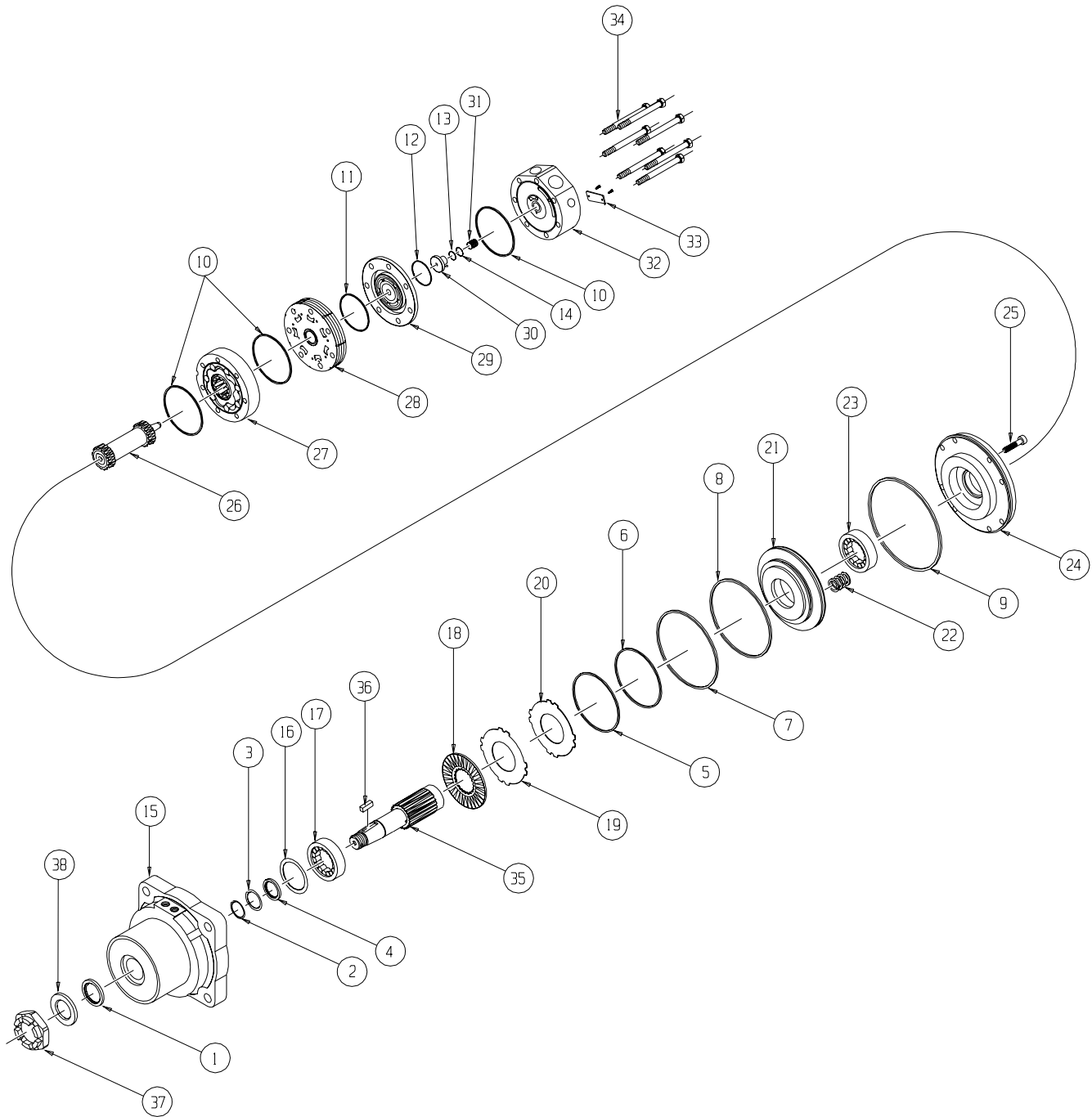


# DT (710) Series



**WARNING AND DISCLAIMER OF WARRANTIES, LIABILITY AND REMEDIES:** Due to the special tools, fixtures and test equipment required to properly service the brake portion of this product, it is highly recommended that all motor/brakes be returned to the factory for repair. White Hydraulics accepts no responsibility for repairs performed by anyone other than White Hydraulics factory service personnel. TO THE EXTENT THAT ANY MOTOR/BRAKE IS REPAIRED BY ANYONE OTHER THAN WHITE HYDRAULICS, WHITE HYDRAULICS DISCLAIMS ANY WARRANTIES ON THE PRODUCTS. WHITE HYDRAULICS DISCLAIMS ANY AND ALL LIABILITY FOR DAMAGES BASED IN ANY WAY UPON PRODUCTS THAT HAVE BEEN REPAIRED BY ANYONE OTHER THAN WHITE HYDRAULICS. IN THE EVENT A PRODUCT REPAIRED BY ANYONE OTHER THAN WHITE HYDRAULICS FAILS, WHITE HYDRAULICS SHALL NOT BE LIABLE FOR ANY INCIDENTAL OR CONSEQUENTIAL DAMAGES RELATED IN ANY WAY TO ANY FAILURE OF THE PRODUCT OR THE REPAIRS. To inquire about repairs and obtain return authorization for a product, please contact the technical support department at 800-323-7298.

# DT (710) SERIES BRAKE MOTOR COMPONENTS

## SEAL KIT 700666750

DESCRIPTION	EXP. VIEW ITEM #	KIT
DUST SEAL	1	
METAL BACKUP SHIM	2	
TEFLON BACKUP SEAL	3	ITEMS # 1-14
SHAFT SEAL	4	INCLUDED IN
SMALL O-RING SEAL	5	SEAL KIT
SMALL TEFLON SEAL	6	700666750
LARGE O-RING SEAL	7	
LARGE TEFLON SEAL	8	
O-RING SEAL	9	
BODY SEALS (3)	10	
MANIFOLD SEAL	11	
COMMUTATOR SEAL	12	
PISTON O-RING SEAL	13	
PISTON TEFLON SEAL	14	

## MISCELLANEOUS KITS

DESCRIPTION	EXP. VIEW ITEM #	KIT
SPACER SHIMS	16	700018096
FRONT SHAFT BEARING	17	700018090
FRICTION DISKS & STAMPINGS (22)	18-20	700018078
PISTON	21	700018088
SPRINGS (25)	22	910018014
REAR SHAFT BEARING	23	700018089
CAPSCREWS (8)	25	200018074
MANIFOLD	28	700668002
COMMUTATOR ASSEMBLY	29	700668003
ENDCOVER PISTON	30	700668004
PISTON SPRING	31	700018046
1000 PSI RELIEF VALVE	NOT SHOWN	500018228
2000 PSI RELIEF VALVE	NOT SHOWN	500018231
3000 PSI RELIEF VALVE	NOT SHOWN	500018221
M42 X 3 CASTLE NUT	37	700669303

## ROTORS, DRIVE LINKS, AND BOLTS

WHEN CHANGING MOTOR DISPLACEMENTS, A MATCHING ROTOR, DRIVE LINK, AND BOLT SET KIT MUST BE ORDERED.

EXPLODED VIEW ITEM #	27	27	26	34
DISPLACEMENT	STANDARD ROTOR KIT	FREETURN ROTOR KIT	DRIVE LINK KIT	BOLT SET KIT
300	700662019	700662019F	700140019	700664019
375	700662025	700662025F	700140025	700664025
470	700662028	700662028F	700140028	700664028
540	700662033	700662033F	700140033	700664033
750	700662046	700662046F	700140046	700664046
930	700662056	---	700140056	700664056
1K1	700662066	700662066F	700140066	700664066
1K5	700662091	---	700140091	700664091
2K1	700662099	---	700140099	700664099

## HOUSING KITS

DESCRIPTION	HOUSING KIT
#W2 & W8- DT SETBACK BRAKE (EXPLODED VIEW ITEM #15)	700130033
REAR HOUSING (EXPLODED VIEW ITEM #24)	700013011

## SHAFTS AND RELATED COMPONENTS KITS

SHAFT KITS COME WITH RELATED SHAFT COMPONENTS (i.e. keys, nuts, etc.)

TO ORDER INDIVIDUAL SHAFT COMPONENTS (i.e. keys, nuts, bolts, washers or wire rings) USE THE KIT NUMBER FOR EACH INDIVIDUAL PART.

EXPLODED VIEW ITEM #	35	36	37	NOT SHOWN
DESCRIPTION	SHAFT KIT	KEY KIT	NUT KIT	WASHER KIT
#50- 2" STRAIGHT	700110029	700669105	---	700669306
#51- 55MM TAPERED	700110030	700669107	700669303	700669307

## ENDCOVER KITS

(EXPLODED VIEW ITEM #32)

ENDCOVER KITS COME ASSEMBLED WITH EXPLODED VIEW ITEMS # 13, 14, 30, & 31.

TO ORDER A RELIEF VALVE FOR THE VALVE CAVITY ENDCOVERS, SEE THE MISCELLANEOUS KITS LISTING ABOVE FOR RELIEF VALVE KIT #S.

DESCRIPTION	STANDARD ENDCOVER KIT	VALVE CAVITY ENDCOVER KIT
#1- 7/8" O-RING REAR PORTS	700160000	700160000R
#5- 1-1/16" O-RING RADIAL PORTS	700160005	700160005R
#2- 3/4" BSP.F RADIAL PORTS	700160007	700160007R
#6- 1-1/16" O-RING PARALLEL PORTS	700160008	700160008R
#7- 3/4" BSP.F PARALLEL PORTS	700160009	---