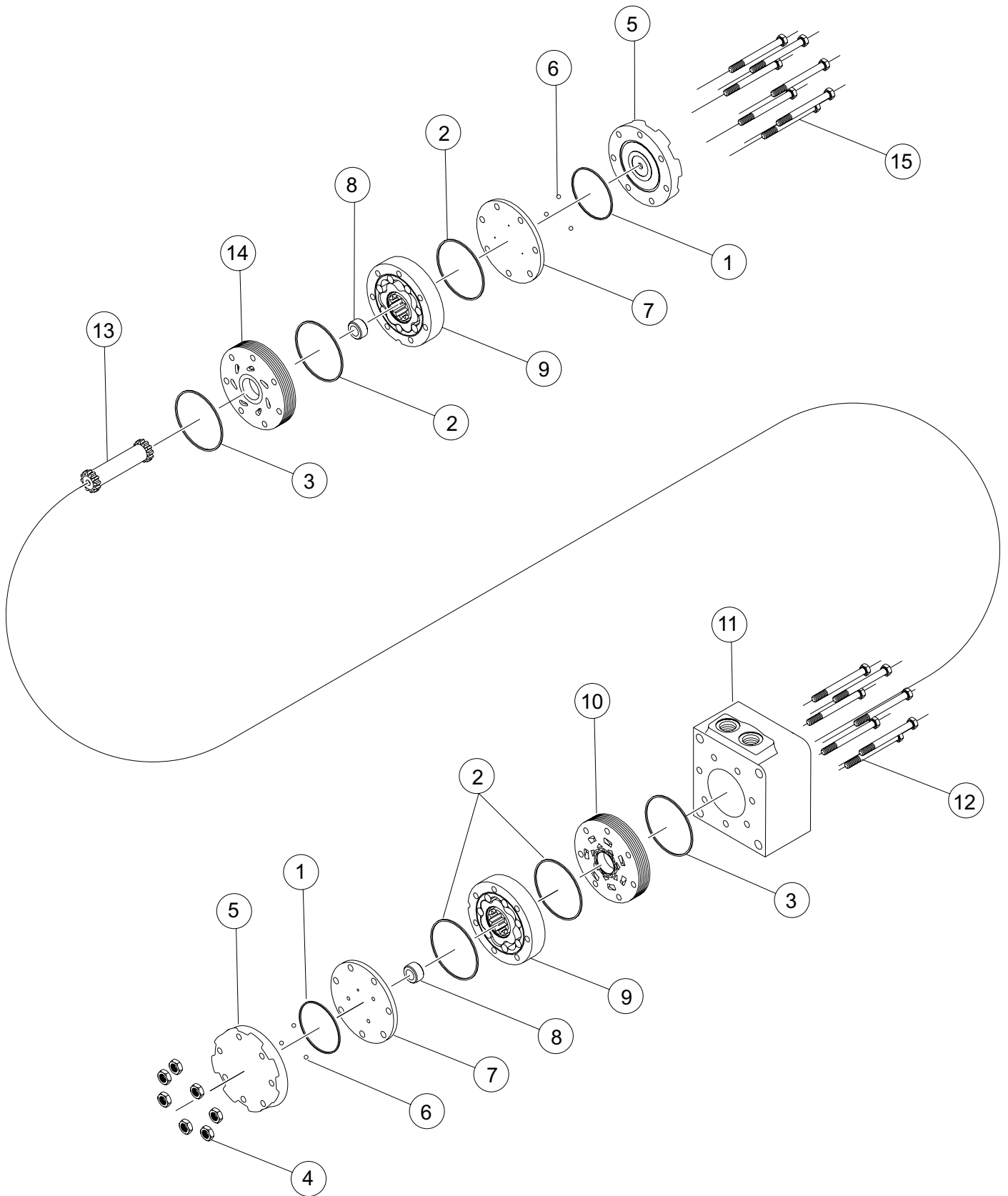


FD (950) Series



FD (950) SERIES MOTOR COMPONENTS

SEAL KIT 950777000

DESCRIPTION	EXP. VIEW ITEM #	KIT
ENDCOVER SEALS (2)	1	ITEMS # 1-3 INCLUDED IN SEAL KIT 950777000
BODY SEALS (4)	2	
HOUSING SEALS (2)	3	

MISCELLANEOUS KITS

DESCRIPTION	EXP. VIEW ITEM #	KIT
NUTS (7)	4	950018000
ENDCOVER	5	500016001
STEEL BALL	6	500018048
BALANCE PLATE (3 BALLS INCLUDED)	6-7	500012001
FORWARD MANIFOLD	10	500015006
PORTED DIVIDER PLATE	11	700012001
REVERSE MANIFOLD	14	500015007

DRIVE LINKS

(EXPLODED VIEW ITEM #13)

LOCATE YOUR MODEL NUMBER IN THE LISTINGS TO DETERMINE WHICH DRIVE LINK TO USE.

MODEL NUMBER	DRIVE LINK KIT
950320M8699AAAAA	ALL MODEL NUMBERS AT LEFT USE DRIVE LINK 700014002
950600M8699AAAAA	

ROTORS, SPACERS, AND BOLTS

EXPLODED VIEW ITEM #	9	8	12	15
DESCRIPTION	ROTOR KIT	SPACER KIT	SOCKET HEAD CAPSCREW KIT	HEX HEAD CAPSCREW KIT
160	500137005	---	950018004	500445006
300	500247005	*** SEE NOTE BELOW	950018042	500445018
375	500307005	500018109	950018006	500445024

***NOTE - FOR THE 300 DISPLACEMENT, (1) 500018075 AND (1) 500018076 SPACER IS REQUIRED.