

## INSTALLATION GUIDE

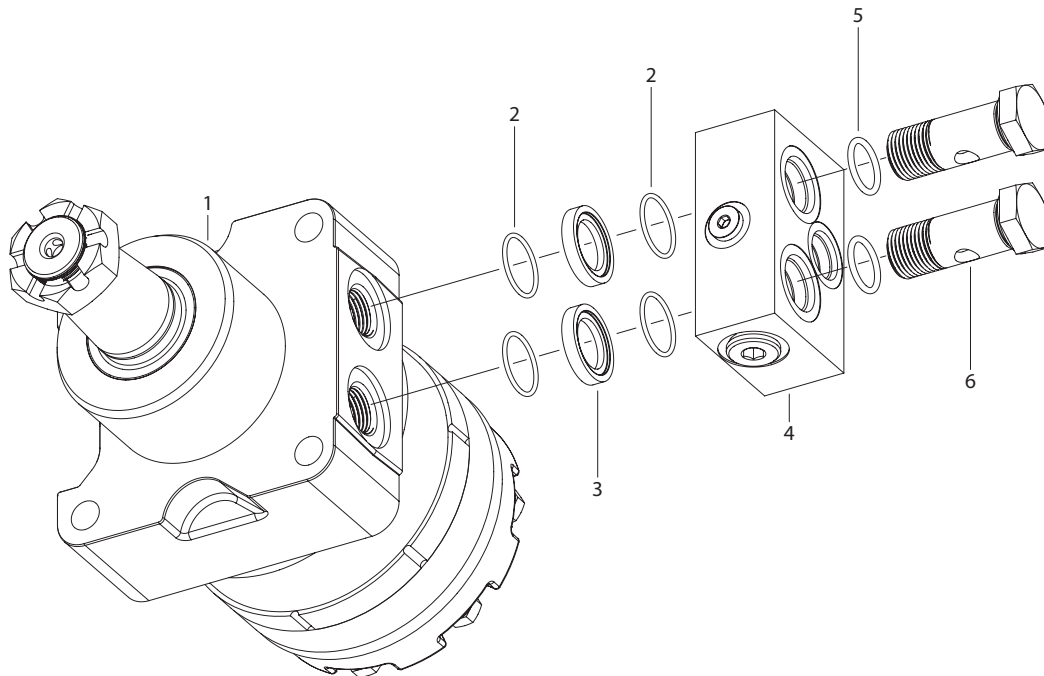
### MAKEUP CHECK VALVE BLOCK ON RE [530] SERIES MOTORS WITH "T" MOUNT HOUSINGS

For Use With Kits: MCV501

dimensions: mm [in]

- A) Lay motor (1) on a flat surface with ports facing up.
- B) Place an o-ring seal (2) into both sides of washers (3) and lower into spotfaces on housing (1).
- C) Aligning the ports on the valve block sub assembly (4) with the ports on housing (1) place the block on the housing.
- D) Place an o-ring (5) into the grooves of both bolts (6).
- E) Insert bolts (6) through valve block sub assembly (4) and thread into housing (1). Evenly tightening bolts to 70 Nm [51 ft lb].

## EXPLODED VIEW DIAGRAM



## EXPLODED VIEW PARTS DESCRIPTION

1. Motor
2. \* Large O-ring (4)
3. \* Washer (2)
4. \* Valve Block Sub-assembly
5. \* Small O-ring (2)
6. \* Bolt (2)

\* Contained in kit MCV501